

MONTAGE MANUAL

ASSEMBLY INSTRUCTION

MONTAGEANLEITUNG

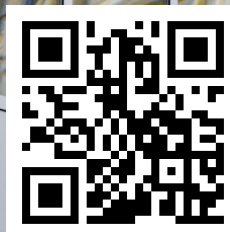
INSTRUKCJA MONTAŻU

Före monteringen är du skyldig att läsa igenom OHS-föreskrifterna, den tekniska dokumentationen och garantivillkoren, tillgänglig via länk: tlc.eu/docs

Prior to the assembly, you are obliged to read and learn the OHS regulations, technical documentation and warranty conditions available at the link: tlc.eu/docs

Vor der Montage sind Sie verpflichtet, sich mit den Arbeitsschutzvorschriften, der technischen Dokumentation und den Garantiebedingungen vertraut zu machen, die unter dem Link: tlc.eu/docs

Przed montażem zapoznaj się z zasadami BHP oraz dokumentacją techniczną i warunkami gwarancji dostępnymi w linku: tlc.eu/docs

**linea**

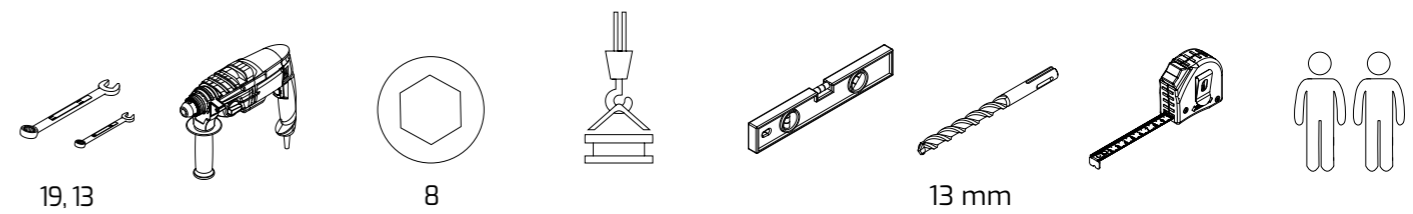
MODULTRAPPOR

MODULAR
STAIRS

MODULTREPPE

SCHODY
MODUŁOWE

B01, B02		B03, B04		B05-B10		B12-B20, B22-B30			
B31-B38, B41-B48		B49, B50		C01-C05		H01		H02	
H03		H04		H06		H07		H08	
H09		H11 - H21, H32 - H34, H46 - H47		H45		H48		H49	
H50		K01-K09		L04		K07		L16	
L05, L17		L18-L22		L23		L25		L06-L10	
PO1, PO3, PO4, PO5		S-SOZ/S-PR/PO2/PO6		R04		S01		T01	
WK4,8X16		M12x90 M12x80 M12x70		M8x80 M8x45 M8x25		MZ5x16		M-ZW-50x30 M-ZW-42,4	
M12x35 M12x30		M12		W12 W8 W5		WS12 WS8			

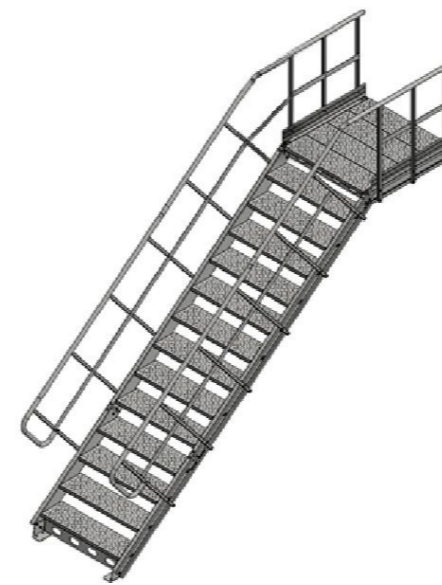


VARIANTER / VARIANTS / OPTIONEN / WARIANTY

P - Plan med avstigning rakt fram /
Landing with frontal exit /
Plattform mit direktem Abstieg /
Podest z zejściem na wprost

BP - Utan plan /
Without landing /
Ohne Plattform /
Bez podestu

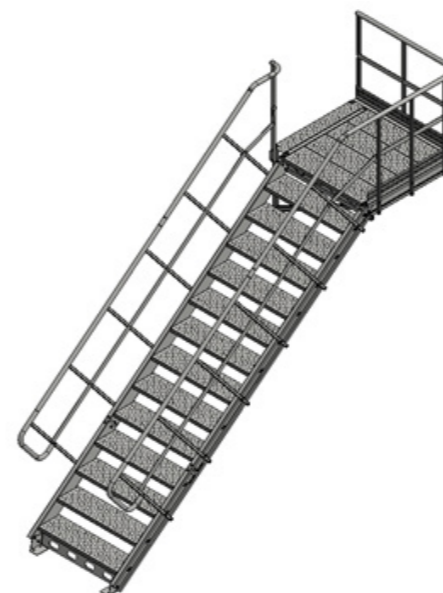
LW - Plan med avstigning åt vänster, med
konsoler / Landing with exit to the left, sup-
ported by brackets / Plattform mit Abstieg
zur linken Seite, gestützt durch Ausleger /
Podest z zejściem na lewy bok podparty
wspornikami



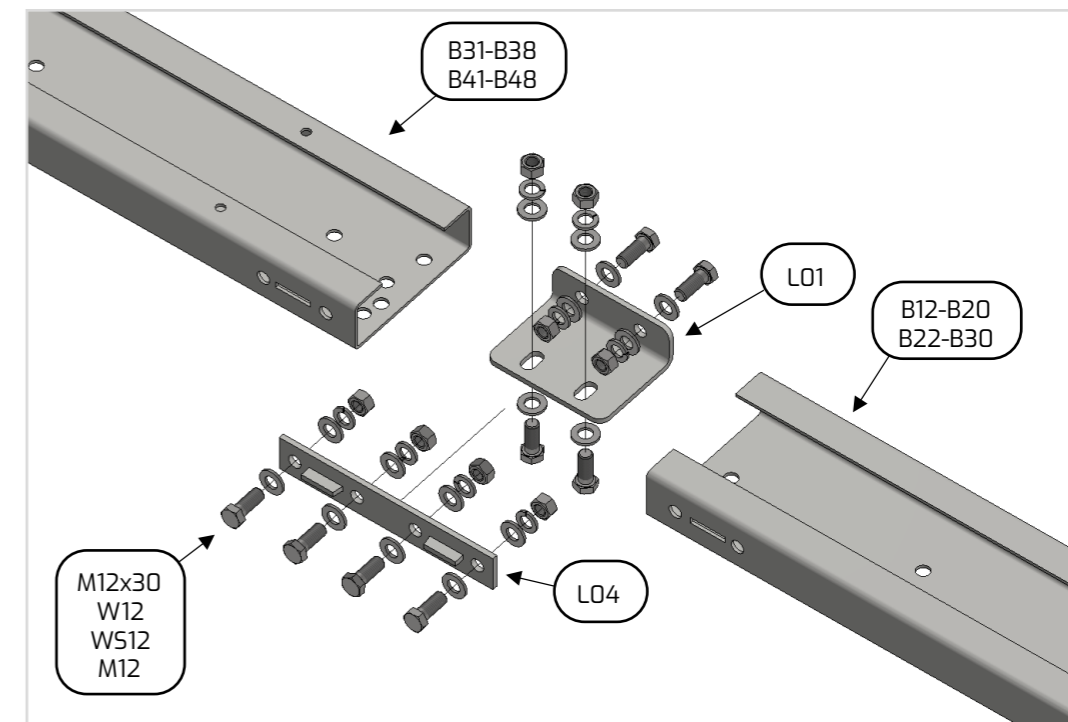
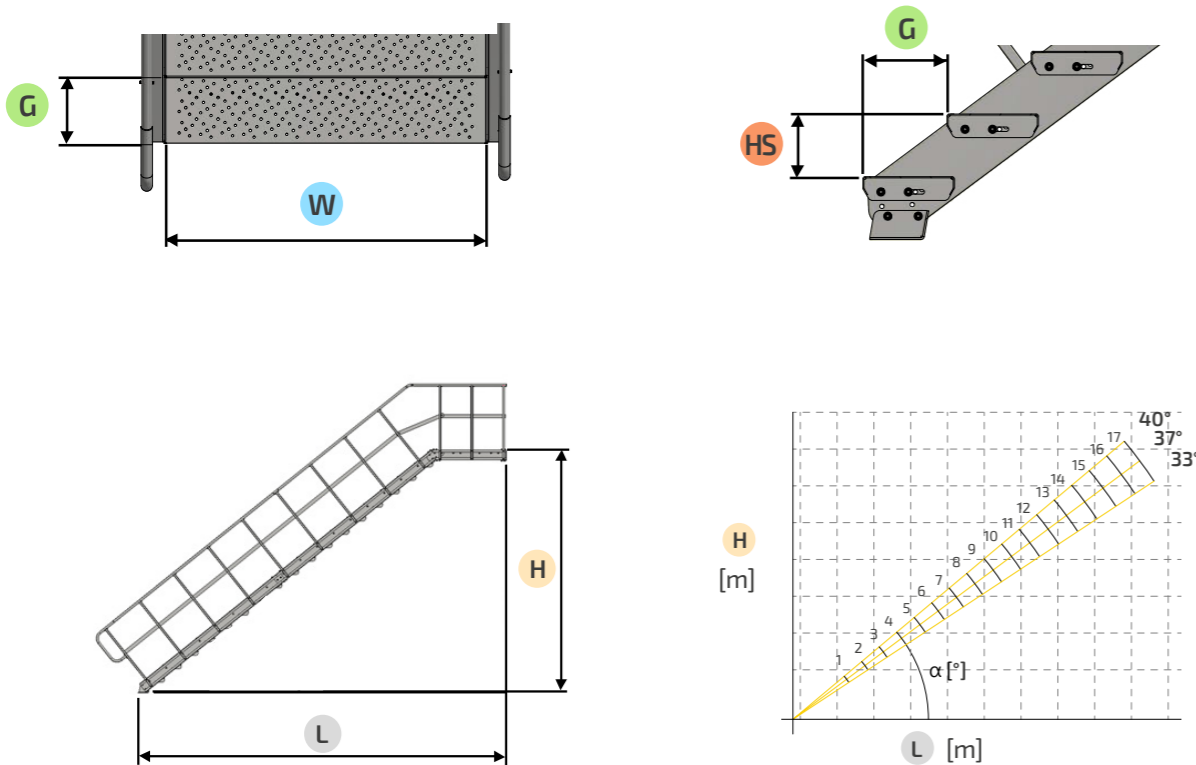
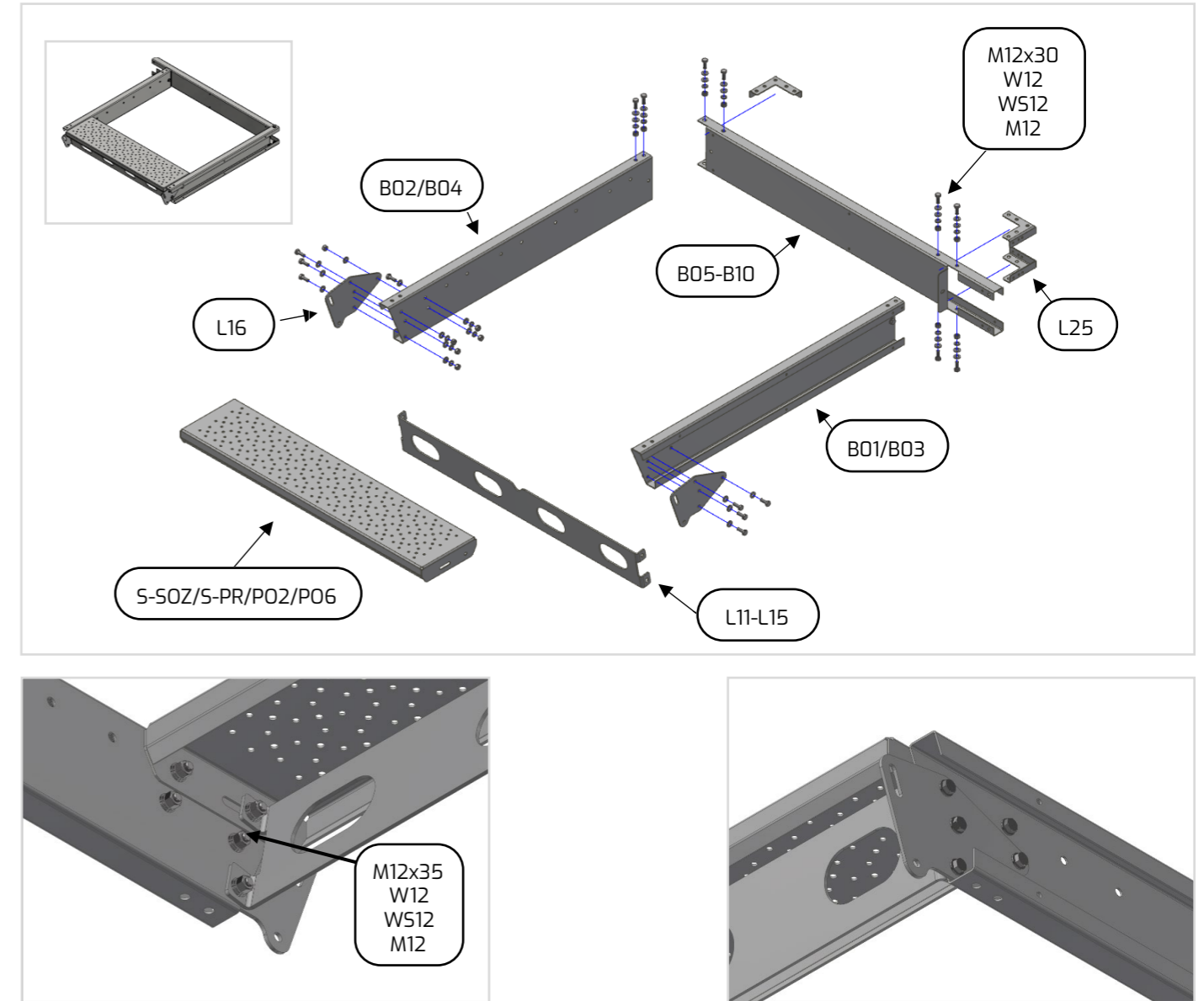
PW - Plan med avstigning åt höger, med
konsoler / Landing with exit to the right, sup-
ported by brackets / Plattform mit Abstieg
zur rechten Seite, gestützt durch Ausleger /
Podest z zejściem na prawy bok
podparty wspornikami

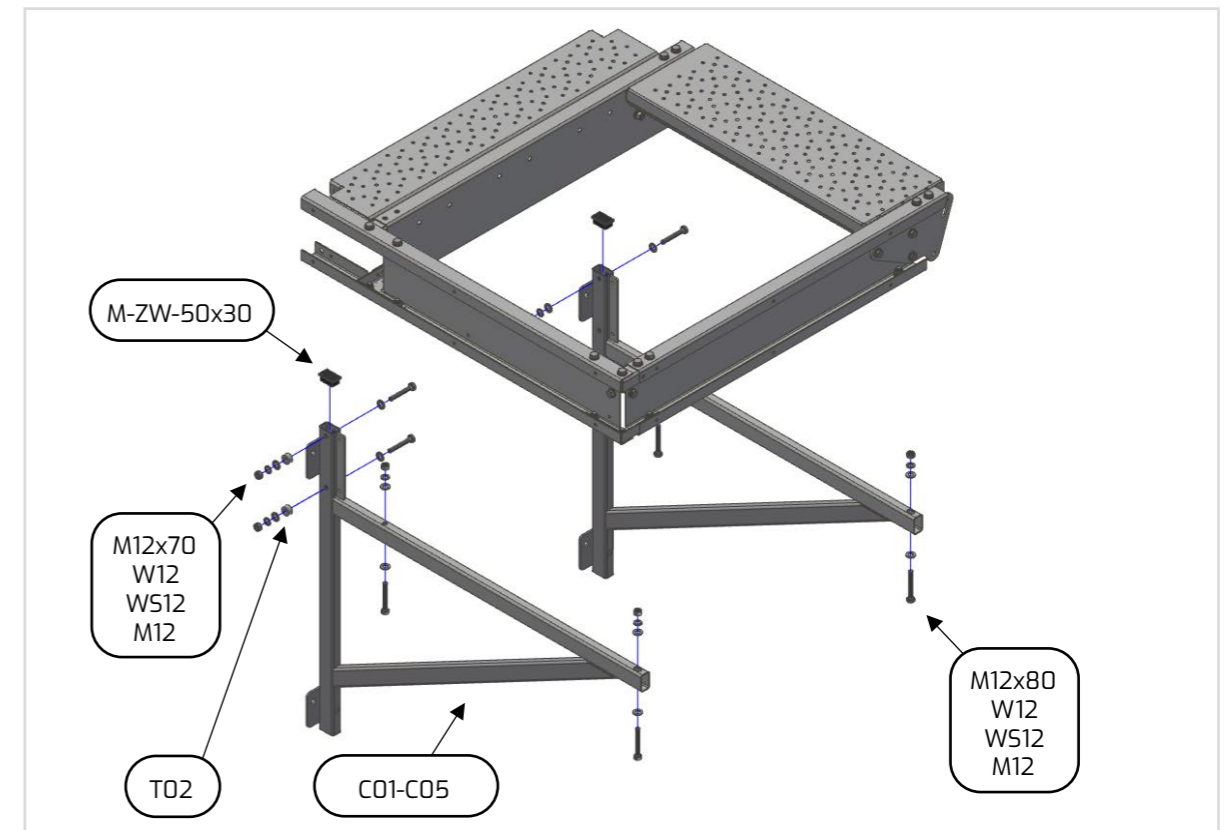
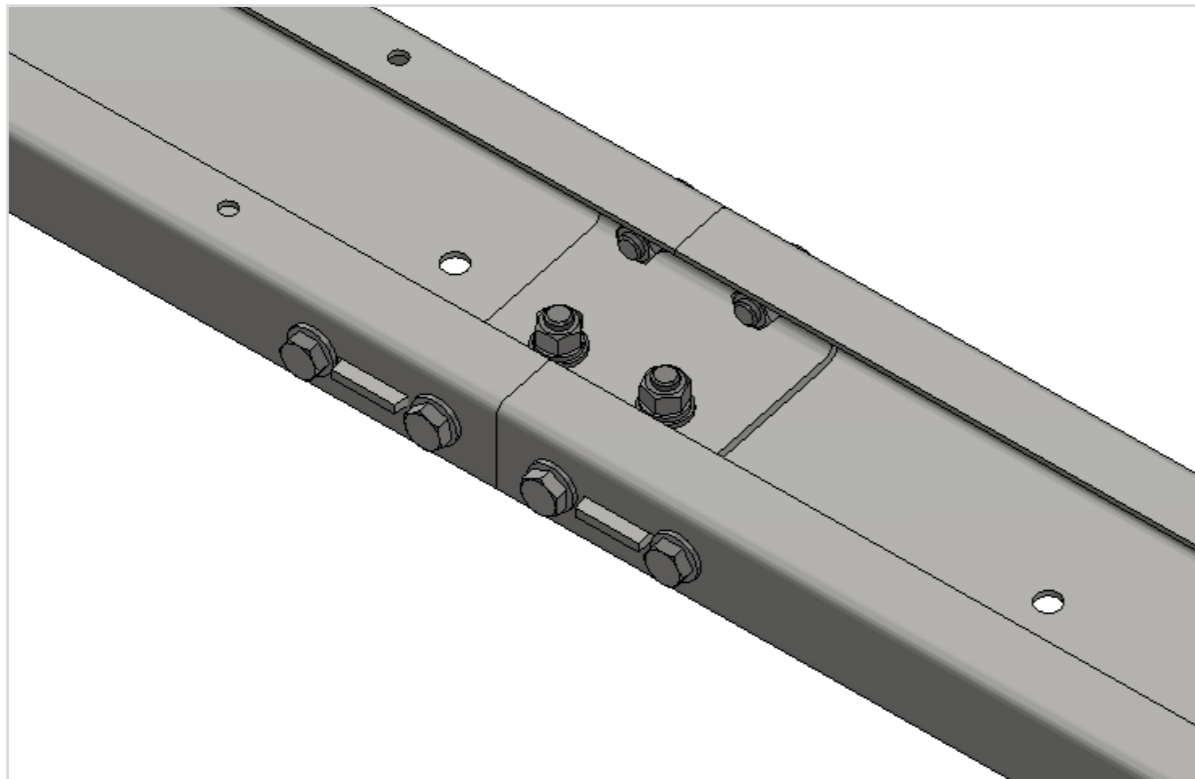
LS - Plan med avstigning åt vänster, med
stödben / Landing with exit to the
left, supported by posts / Plattform mit
Abstieg zur linken Seite gestützt durch
Säulen / Podest z zejściem na lewy bok
podparty słupami

PS - Plan med avstigning åt höger, med
stödben / Landing with exit to the right, sup-
ported by posts / Plattform mit Abstieg zur
rechten Seite, gestützt durch Säulen /
Podest z zejściem na prawy bok podparty
stłupami



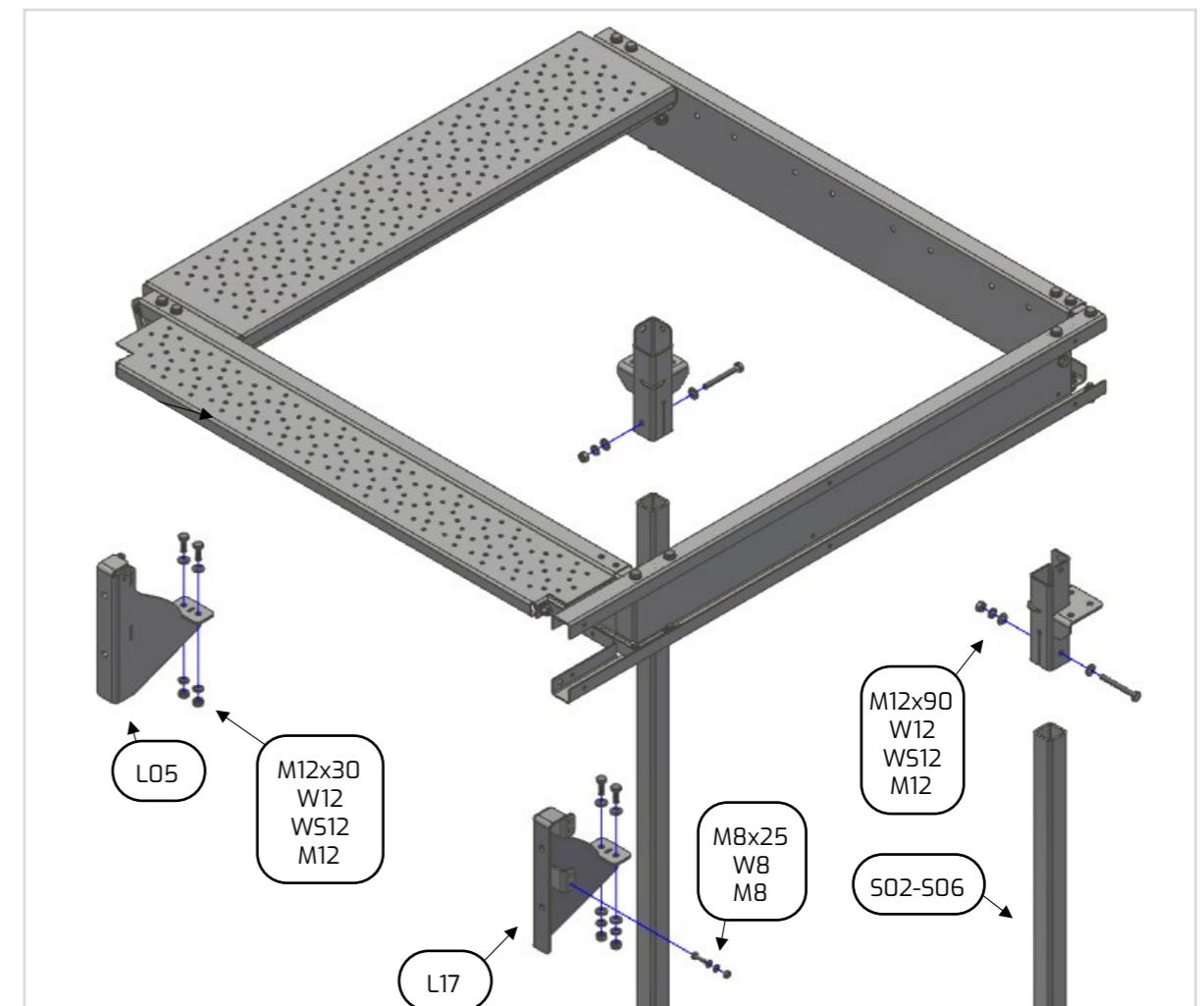
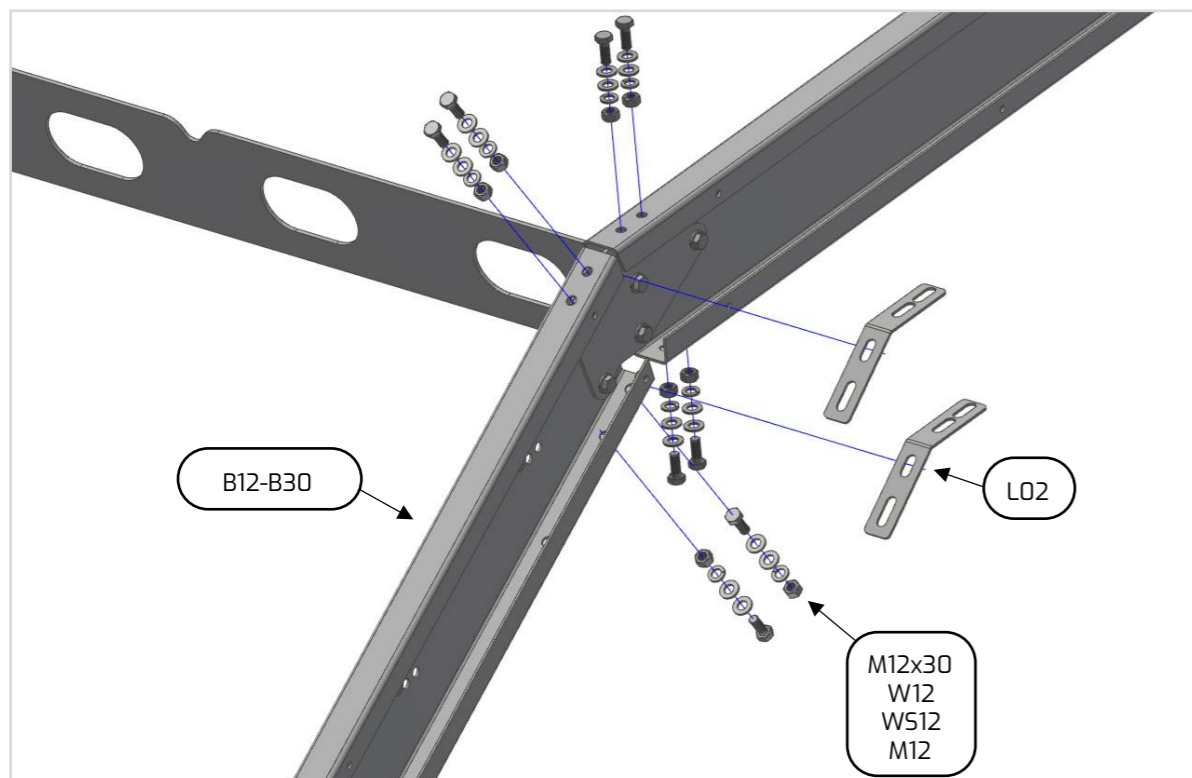
Number of steps ↓	TYPE 33								TYPE 37								TYPE 40										
	G = 260 mm				HS = 171 mm				G = 250 mm				HS = 185,5 mm				G = 238 mm				HS = 200 mm						
	Variant	BP	P	LS/PS	LW/PW	Variant	BP	P	LS/PS	LW/PW	Variant	BP	P	LS/PS	LW/PW	Variant	BP	P	LS/PS	LW/PW	Variant	BP	P	LS/PS	LW/PW		
	W →	800 1200	800 900 1000 1200	1100 1200	800 900 1000 1200	1100 1200	800 900 1000 1200	1100 1200	800 900 1000 1200	1100 1200	W →	800 1200	800 900 1000 1200	1100 1200	800 900 1000 1200	1100 1200	800 900 1000 1200	1100 1200	800 900 1000 1200	1100 1200	W →	800 1200	800 900 1000 1200	1100 1200	800 900 1000 1200	1100 1200	
	H ↓	L ↓								H ↓	L ↓								H ↓	L ↓							
2		330	537	1340	1610	1390	1660	-	-	370	515	1318	1588	1368	1638	-	-	390	537	1340	1610	1390	1660	-	-		
3		500	797	1600	1870	1650	1920	-	-	560	767	1570	1840	1620	1890	-	-	590	767	1570	1840	1620	1890	-	-		
4		670	1057	1860	2130	1910	2180	-	-	740	1017	1820	2090	1870	2140	-	-	790	1007	1810	2080	1860	2130	-	-		
5		840	1317	2120	2390	2170	2440	-	-	930	1267	2070	2340	2120	2390	2120	2390	990	1247	2050	2320	2100	2370	2100	2370		
6		1010	1577	2380	2650	2430	2700	-	-	1110	1507	2310	2580	2360	2630	2360	2630	1190	1487	2290	2560	2340	2610	2340	2610		
7		1180	1837	2640	2910	2690	2960	2690	2960	1300	1757	2560	2830	2610	2880	2610	2880	1390	1717	2520	2790	2570	2840	2570	2840		
8		1360	2097	2900	3170	2950	3220	2950	3220	1490	2007	2810	3080	2860	3130	2860	3130	1590	1957	2760	3030	2810	3080	2810	3080		
9		1530	2347	3150	3420	3200	3470	3200	3470	1670	2257	3060	3330	3110	3380	3110	3380	1790	2197	3000	3270	3050	3320	3050	3320		
10		1700	2607	3410	3680	3460	3730	3460	3730	1860	2507	3310	3580	3360	3630	3360	3630	1990	2437	3240	3510	3290	3560	3290	3560		
11		1870	2867	3670	3940	3720	3990	3720	3990	2040	2757	3560	3830	3610	3880	3610	3880	2190	2677	3480	3750	3530	3800	3530	3800		
12		2040	3127	3930	4200	3980	4250	3980	4250	2230	3007	3810	4080	3860	4130	3860	4130	2390	2907	3710	3980	3760	4030	3760	4030		
13		2210	3387	4190	4460	4240	4510	4240	4510	2410	3257	4060	4330	4110	4380	4110	4380	2590	3147	3950	4220	4000	4270	4000	4270		
14		2380	3647	4450	4720	4500	4770	4500	4770	2600	3507	4310	4580	4360	4630	4360	4630	2780	3387	4190	4460	4240	4510	4240	4510		
15		2550	3907	4710	4980	4760	5030	4760	5030	2780	3747	4550	4820	4600	4870	4600	4870	2980	3627	4430	4700	4480	4750	4480	4750		
16		2720	4167	4970	5240	5020	5290	5020	5290	2970	3997	4800	5070	4850	5120	4850	5120	3180	3867	4670	4940	4720	4990	4720	4990		
17		2890	4437	5240	5510	5290	5560	5290	5560	3160	4247	5050	5320	5100	5370	5100	5370	3380	4097	4900	5170	4950	5220	4950	5220		
18		3060	4687	5490	5760	5540	5810	5540	5810	3340	4497	5300	5570	5350	5620	5350	5620	3580	4337	5140	5410	5190	5460	5190	5460		

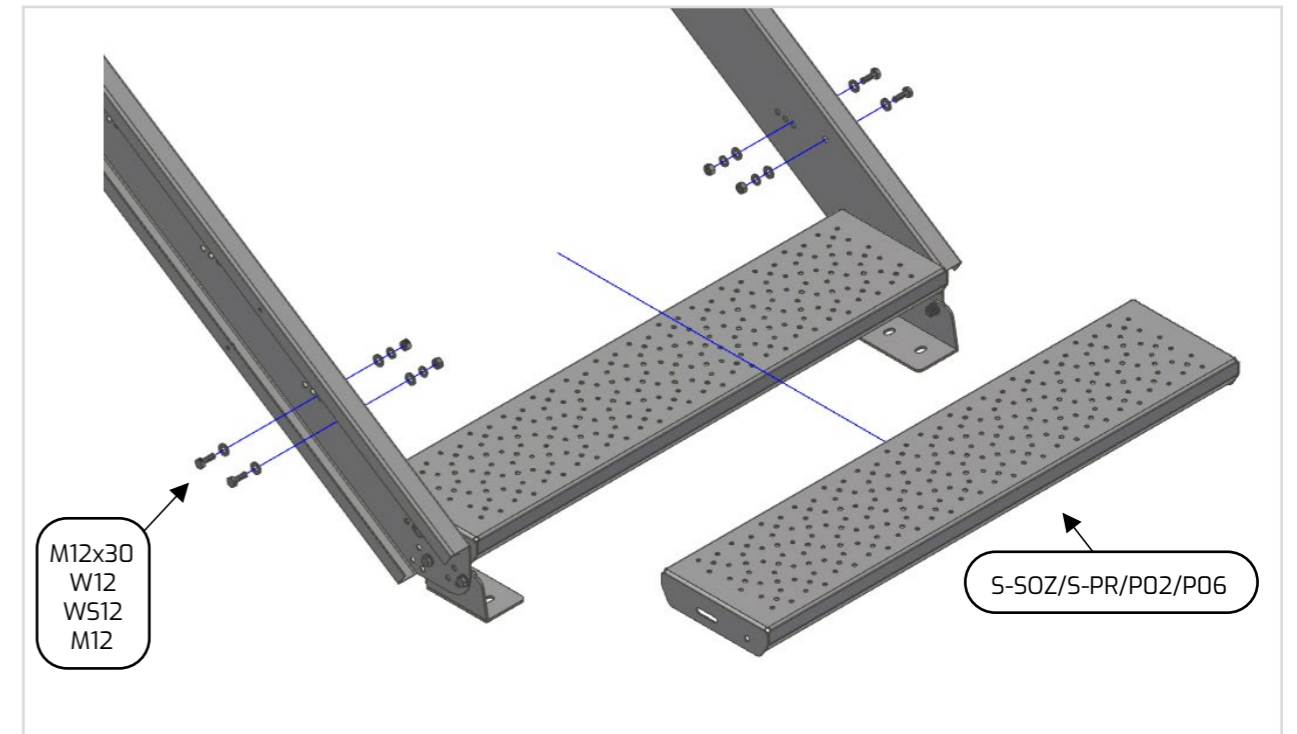
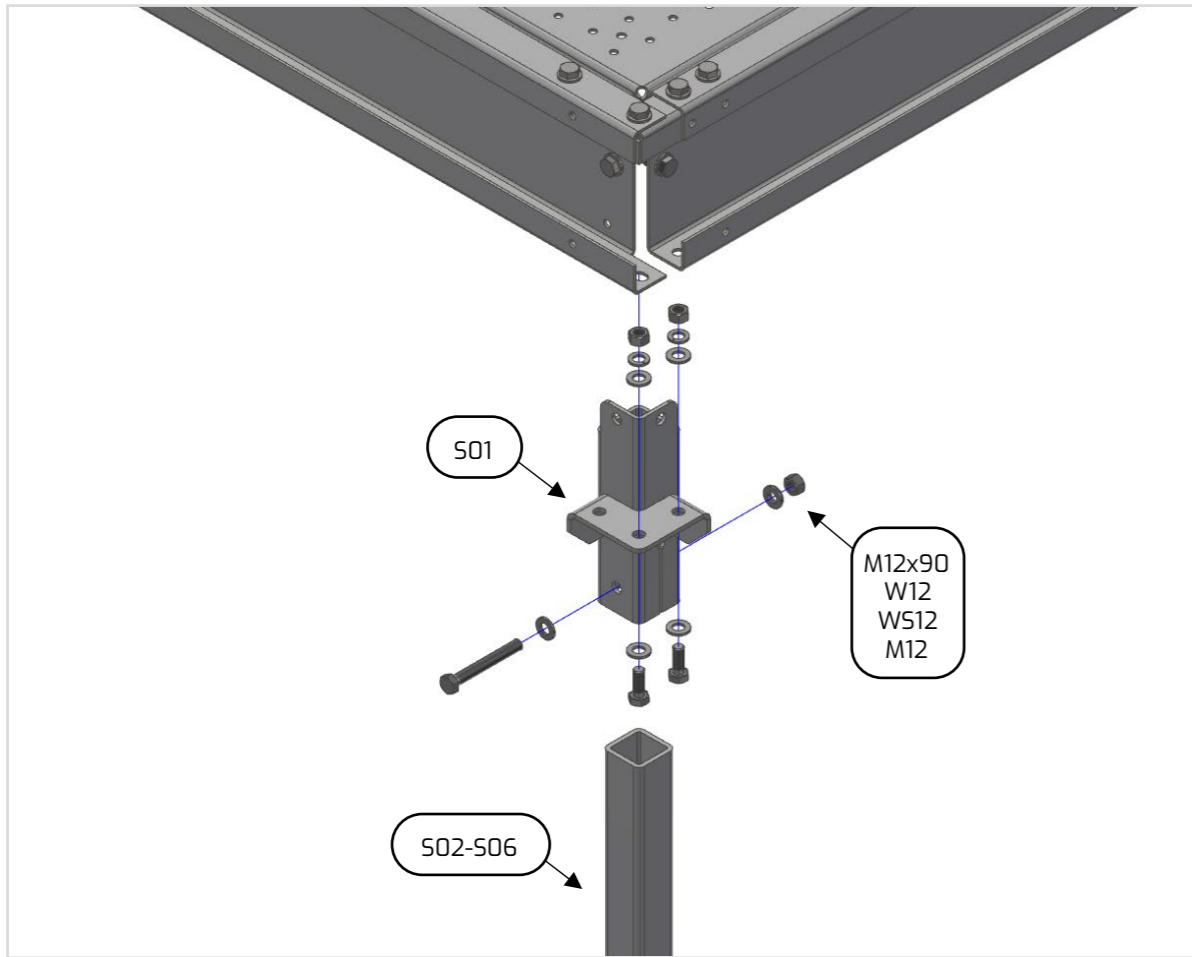




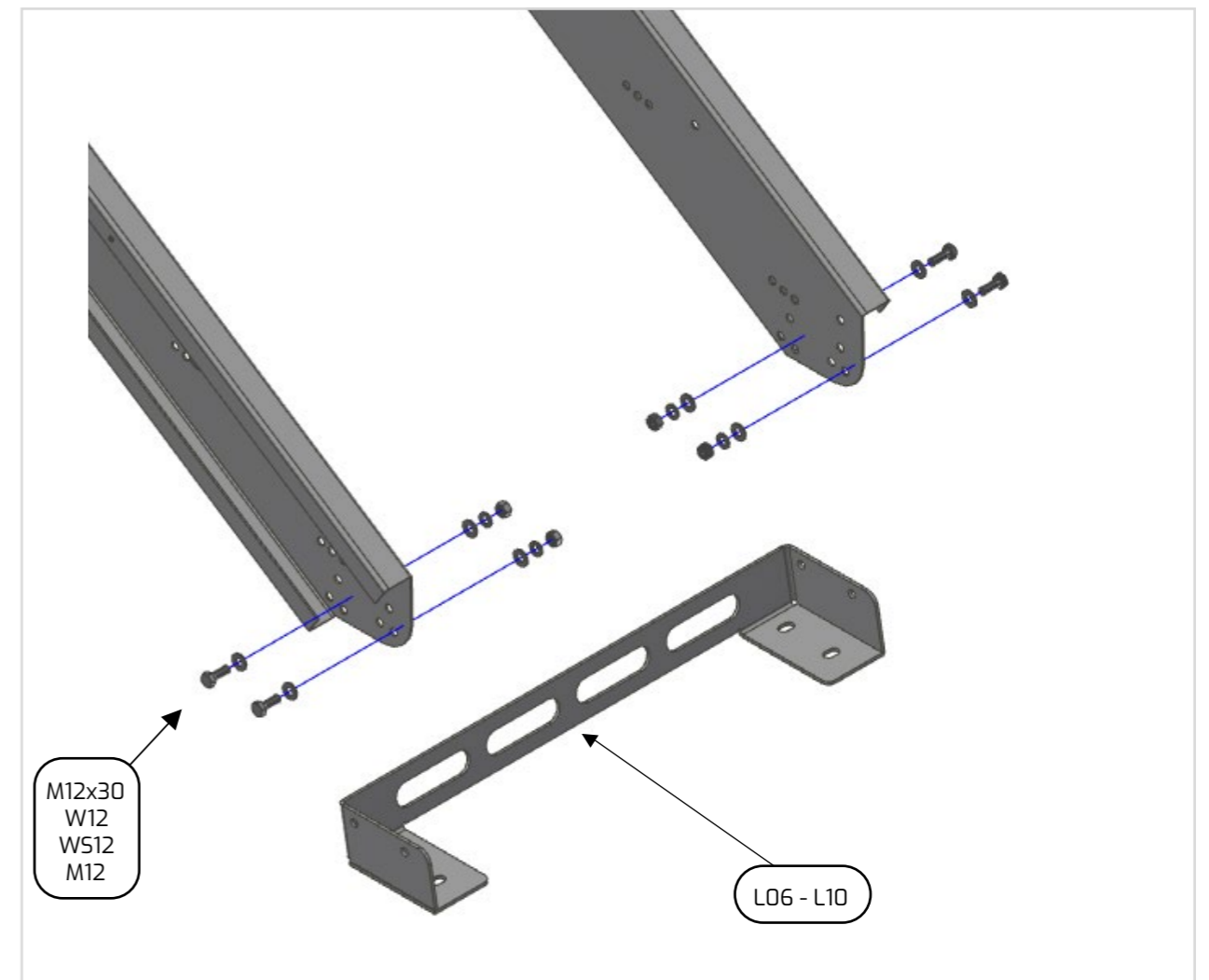
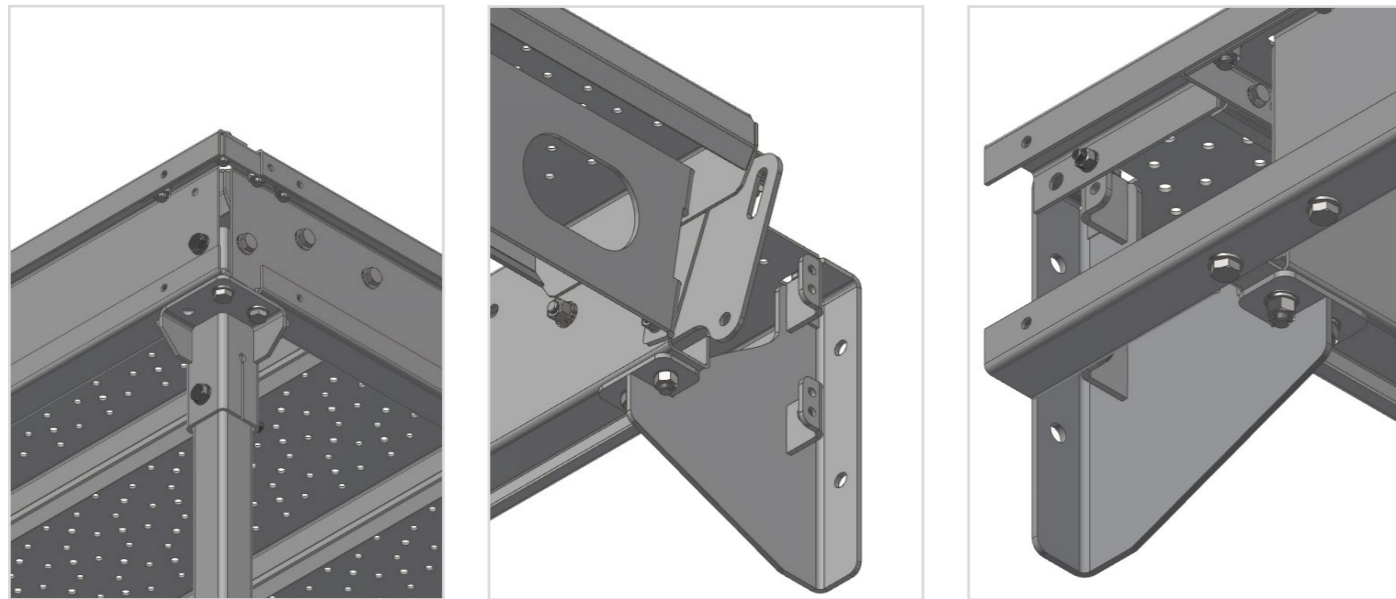
ANSLUTNING AV PLAN MED VANGSTYCKE / CONNECTION OF LANDING WITH STAIRS BEAM / ANSCHLUSS DES PODESTES AN DIE TREPPENWANGE / POŁĄCZENIE PODESTU Z BELKĄ SCHODNI

PLACERING AV PLATTFORM TILL STÖDBEN / SEATING OF THE PLATFORM ON POSTS / BEFESTIGEN DER PLATTFORM AN DEN SÄULEN / OSADZENIE PODESTU NA SŁUPACH

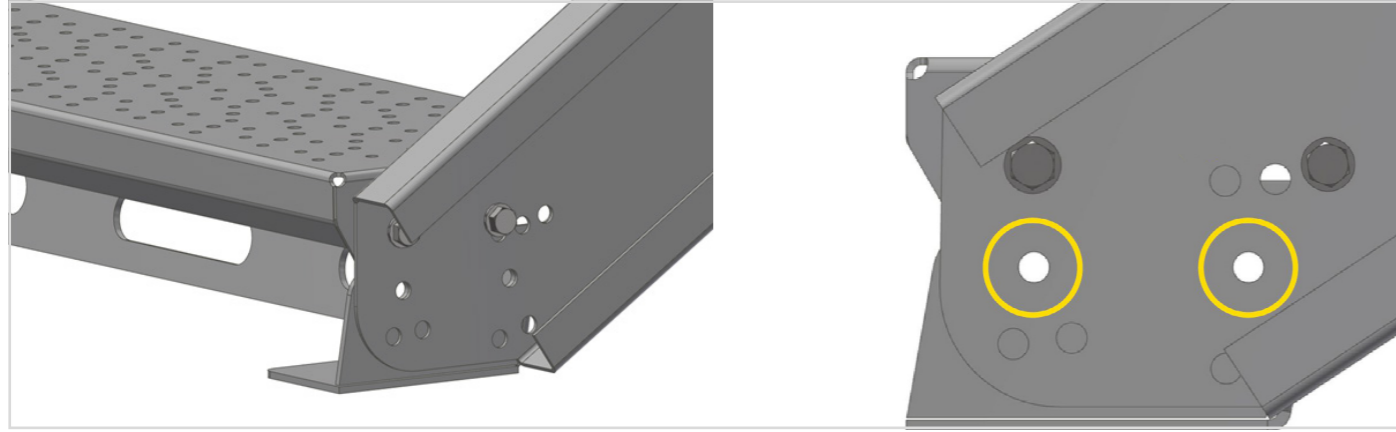




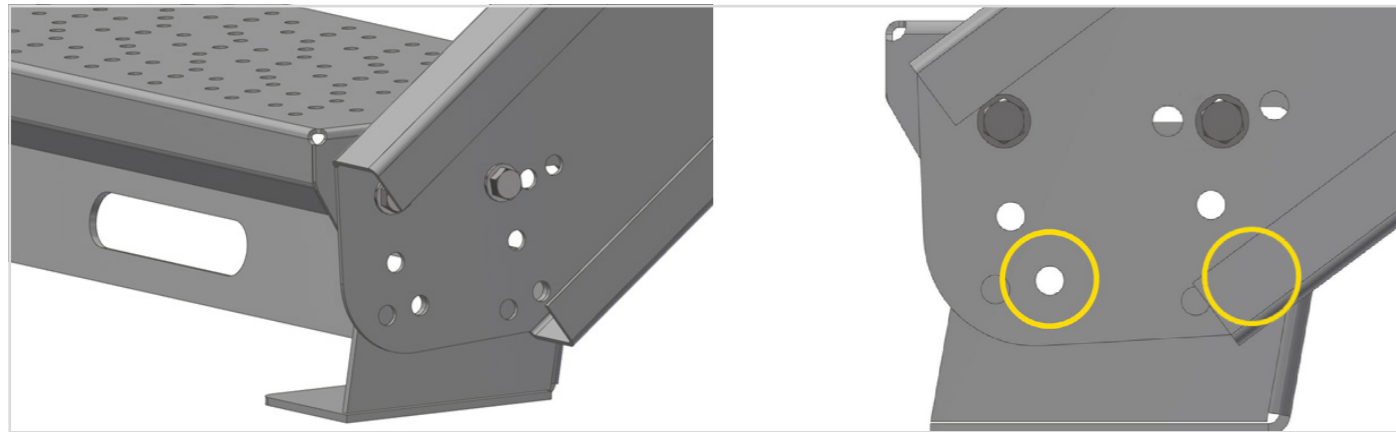
MONTAGE AV TRAPPANS NEDRE INFÄSTNING / ASSEMBLY OF THE LOWER FLIGHT OF STAIRS FIXING /
 MONTAGE DER UNTEREN TREPPENWANGE / MONTAŻ DOLNEGO MOCOWANIA SCHODNI



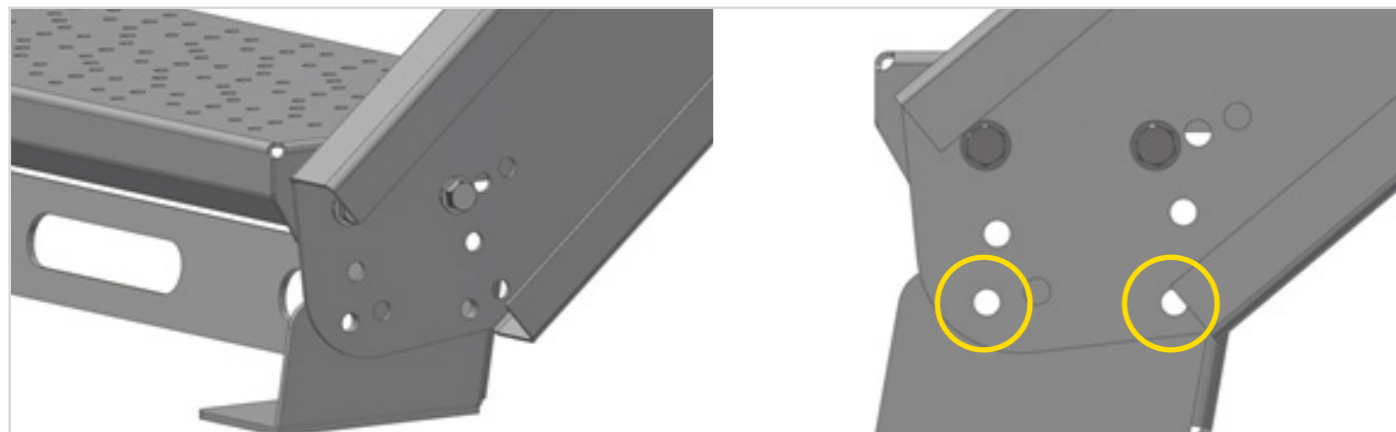
MONTERINGSHÅL $\alpha=33^\circ$ / ASSEMBLY OPENINGS $\alpha=33^\circ$ / MONTAGELÖCHER $\alpha=33^\circ$ /
OTWORY MONTAŻOWE $\alpha=33^\circ$



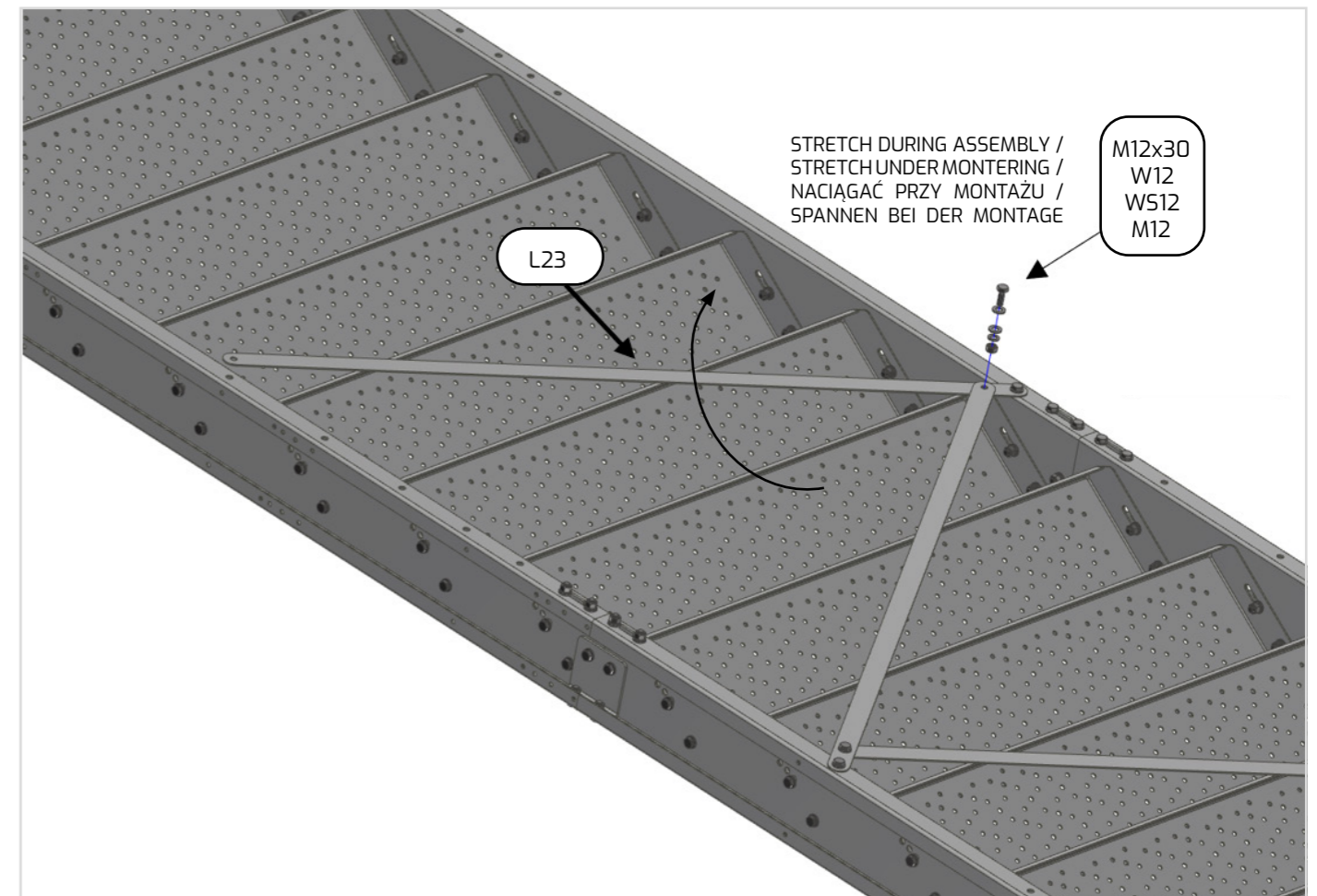
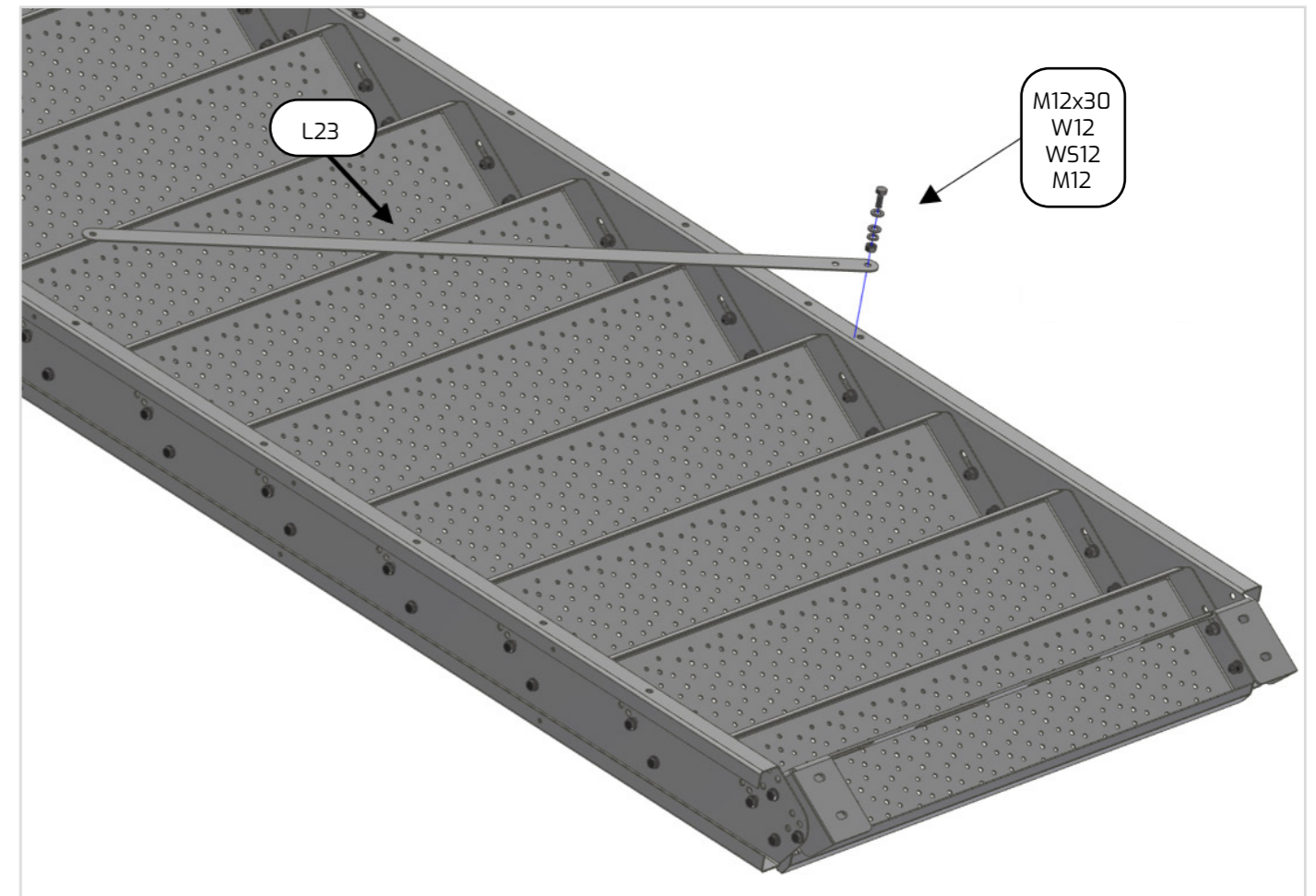
MONTERINGSHÅL $\alpha=37^\circ$ / ASSEMBLY OPENINGS $\alpha=37^\circ$ / MONTAGELÖCHER $\alpha=37^\circ$ /
OTWORY MONTAŻOWE $\alpha=37^\circ$

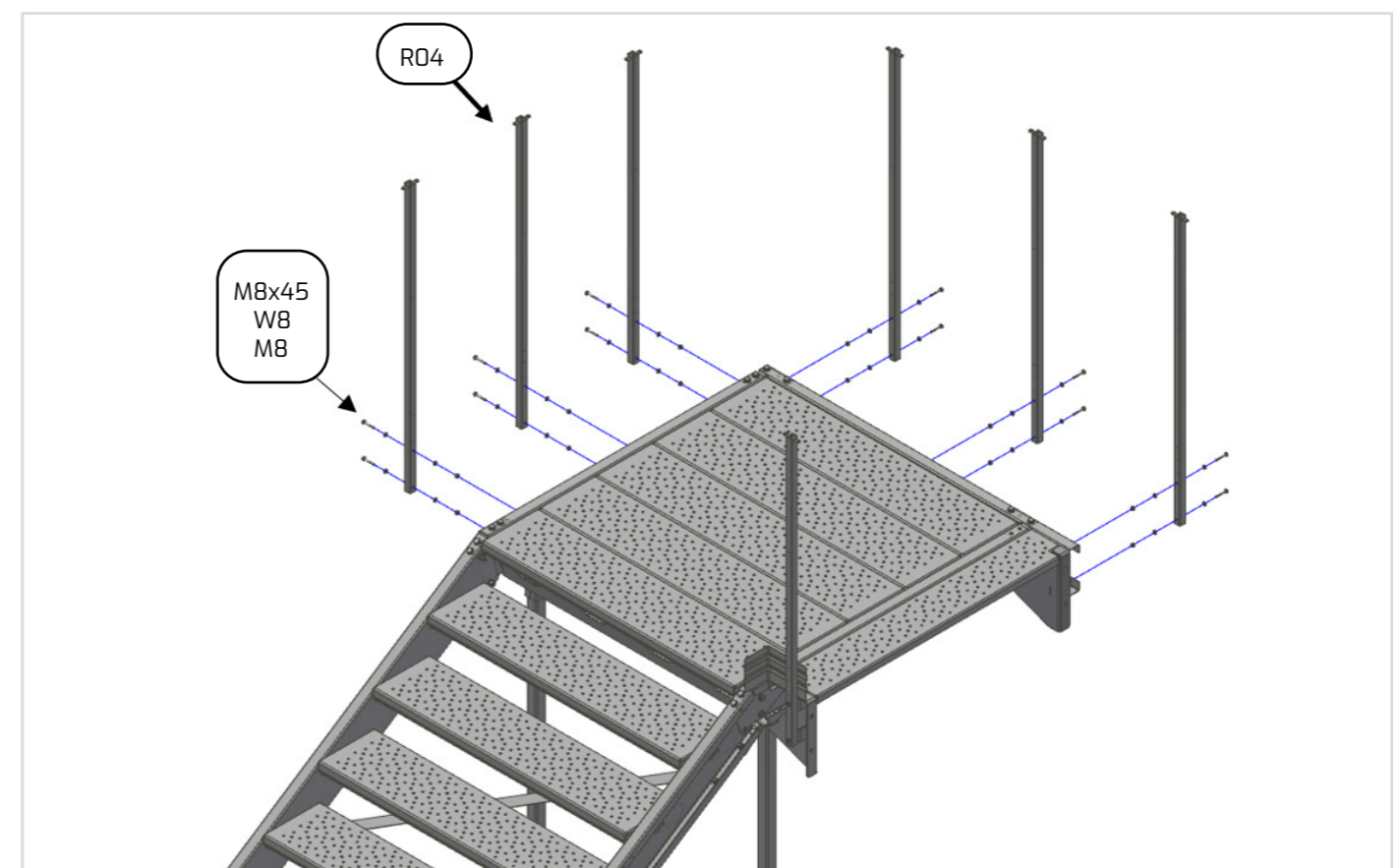
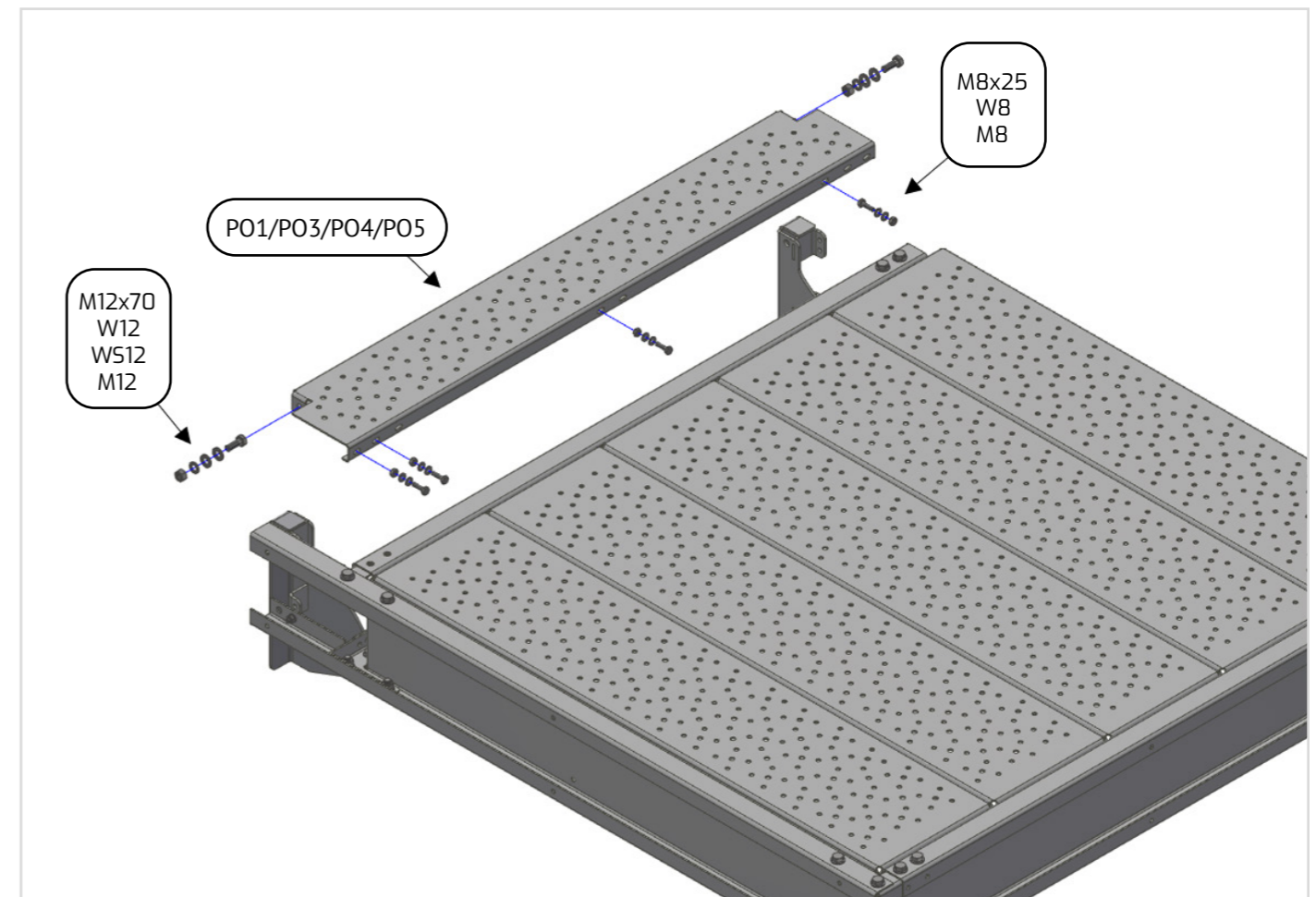
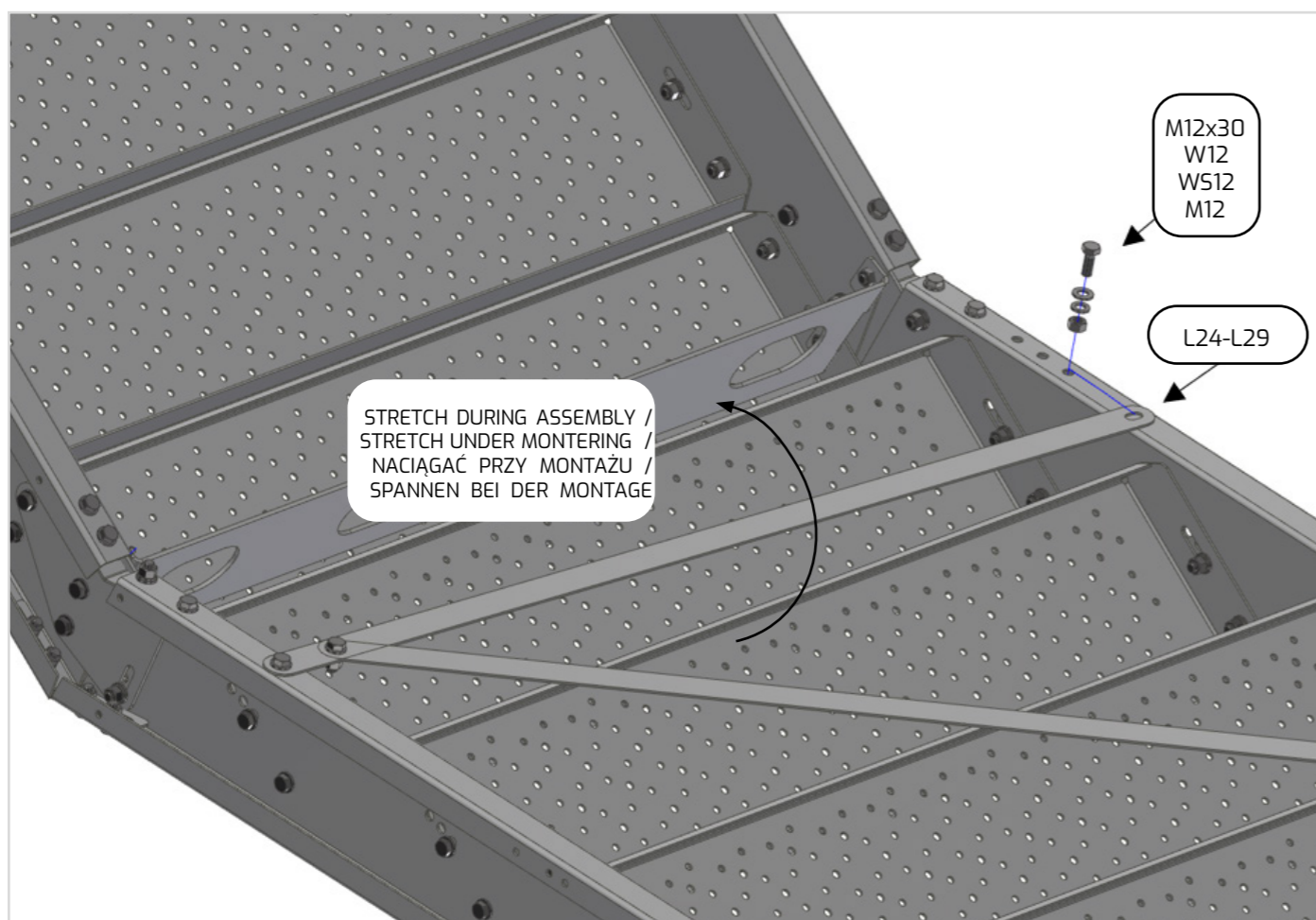
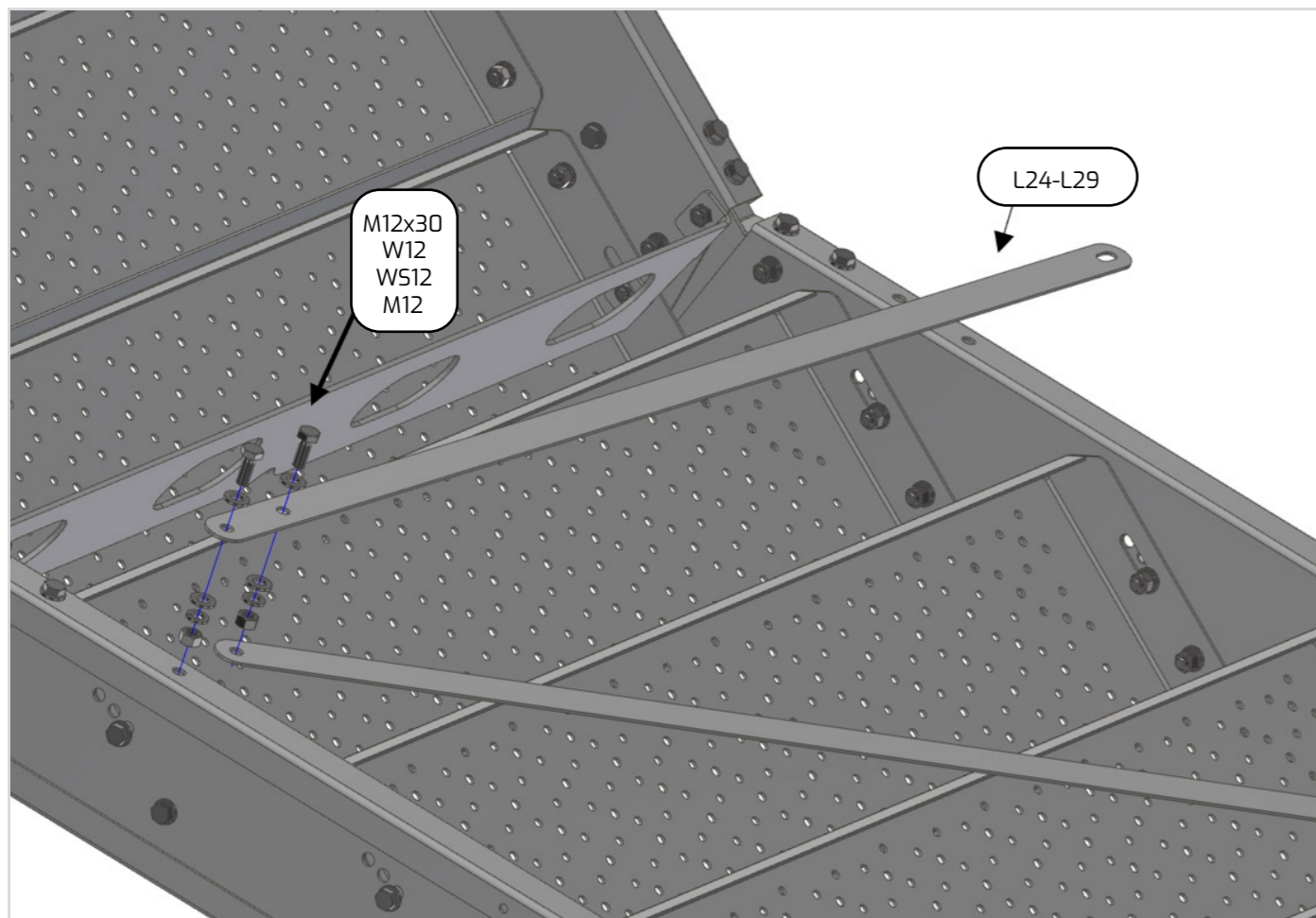


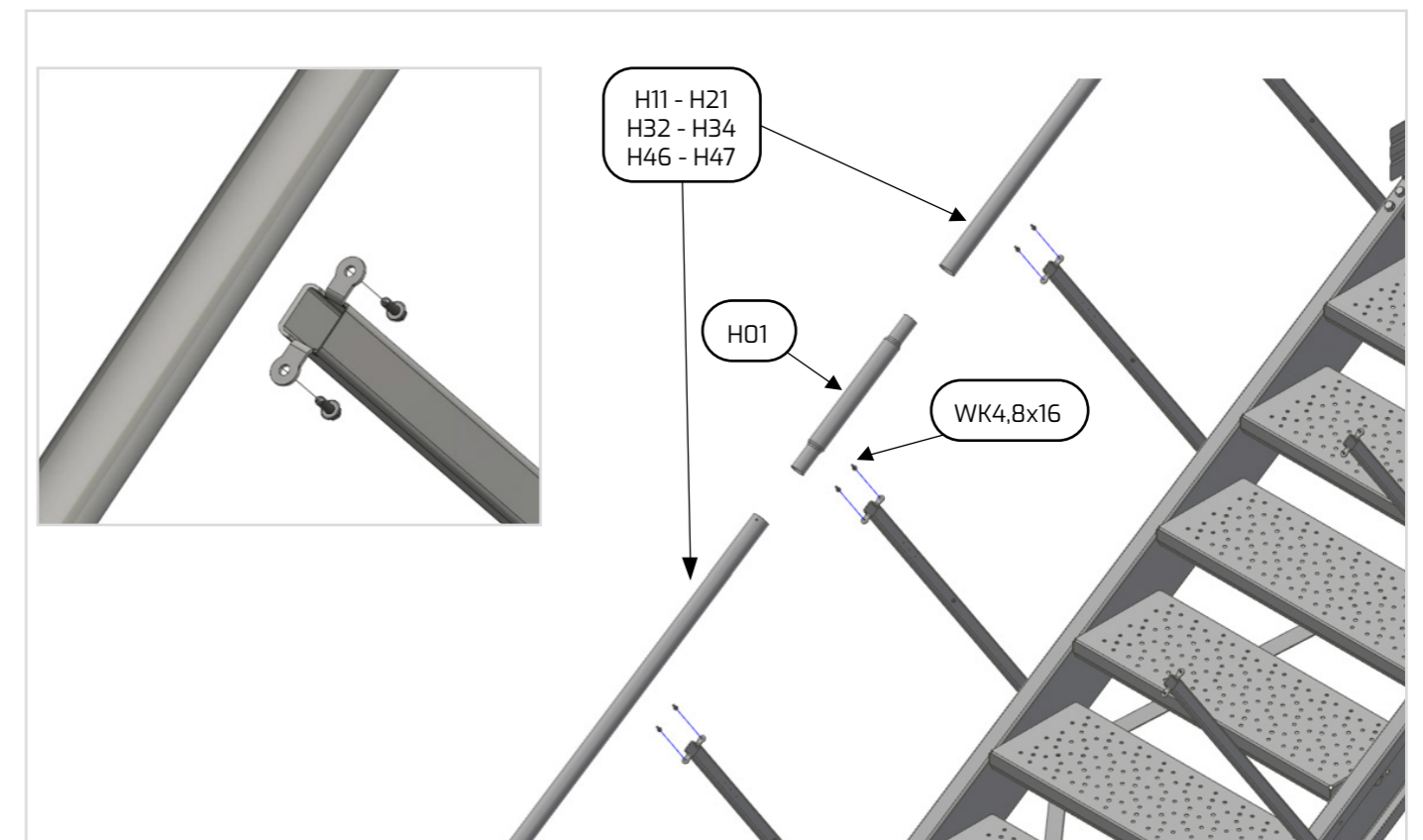
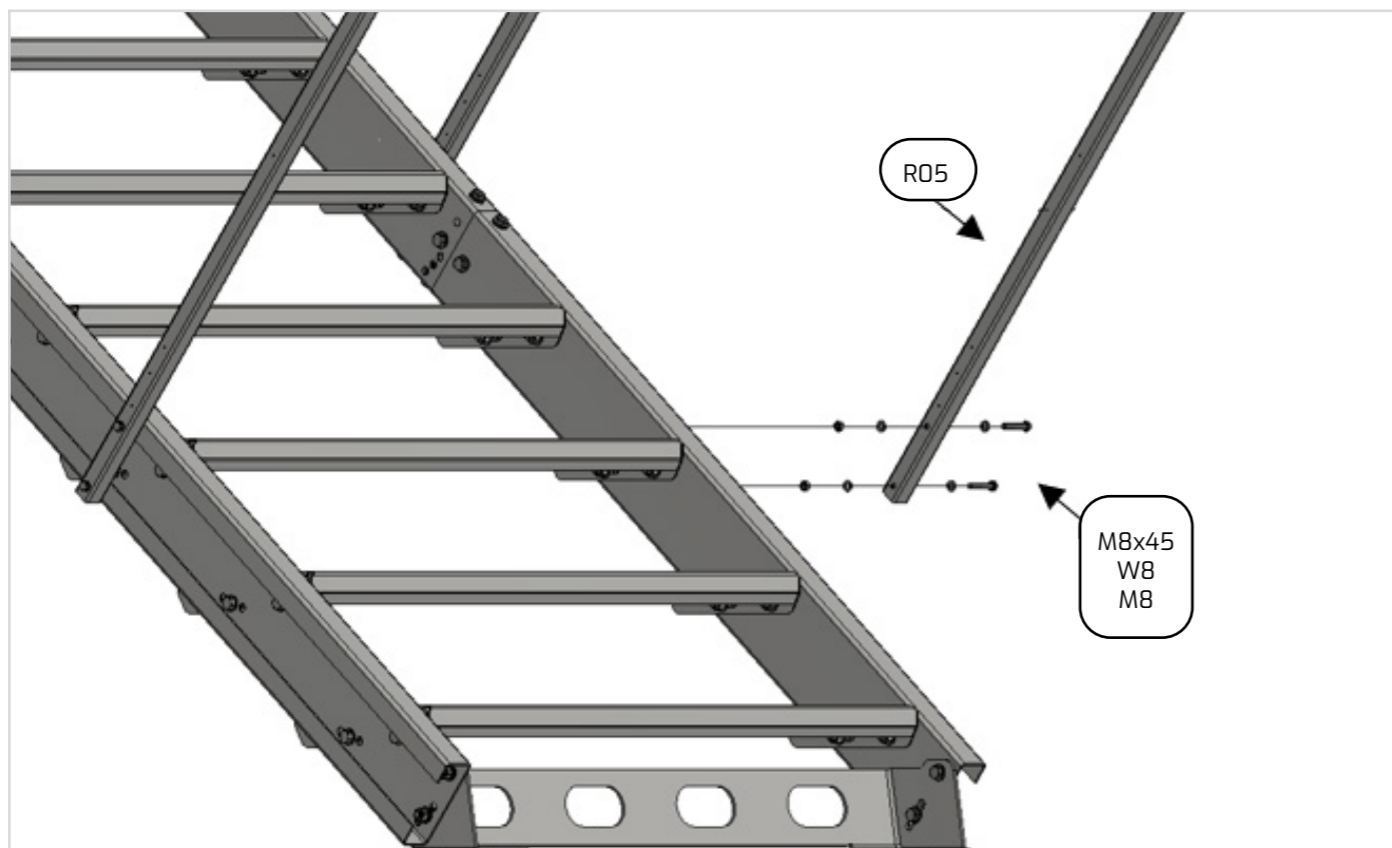
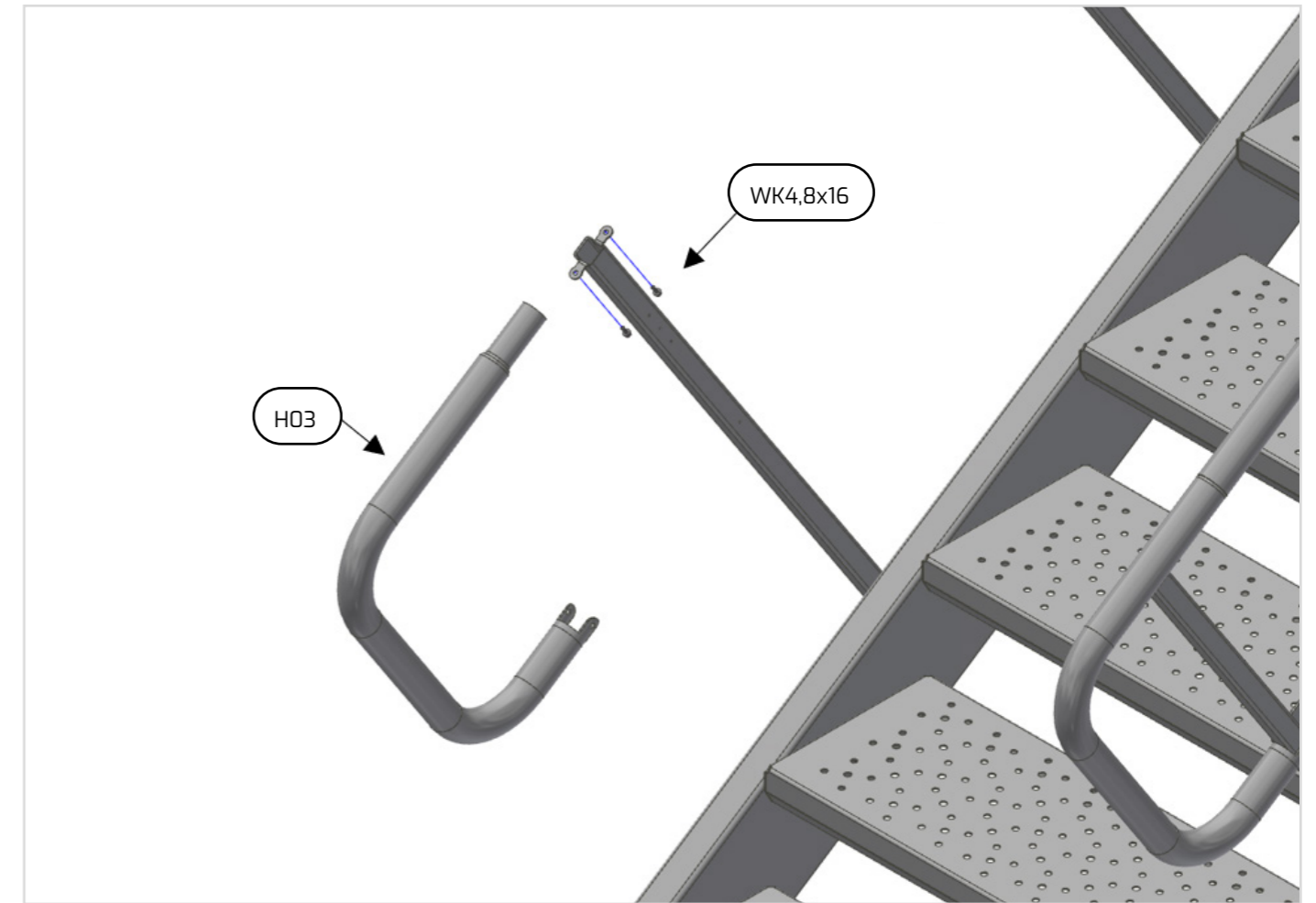
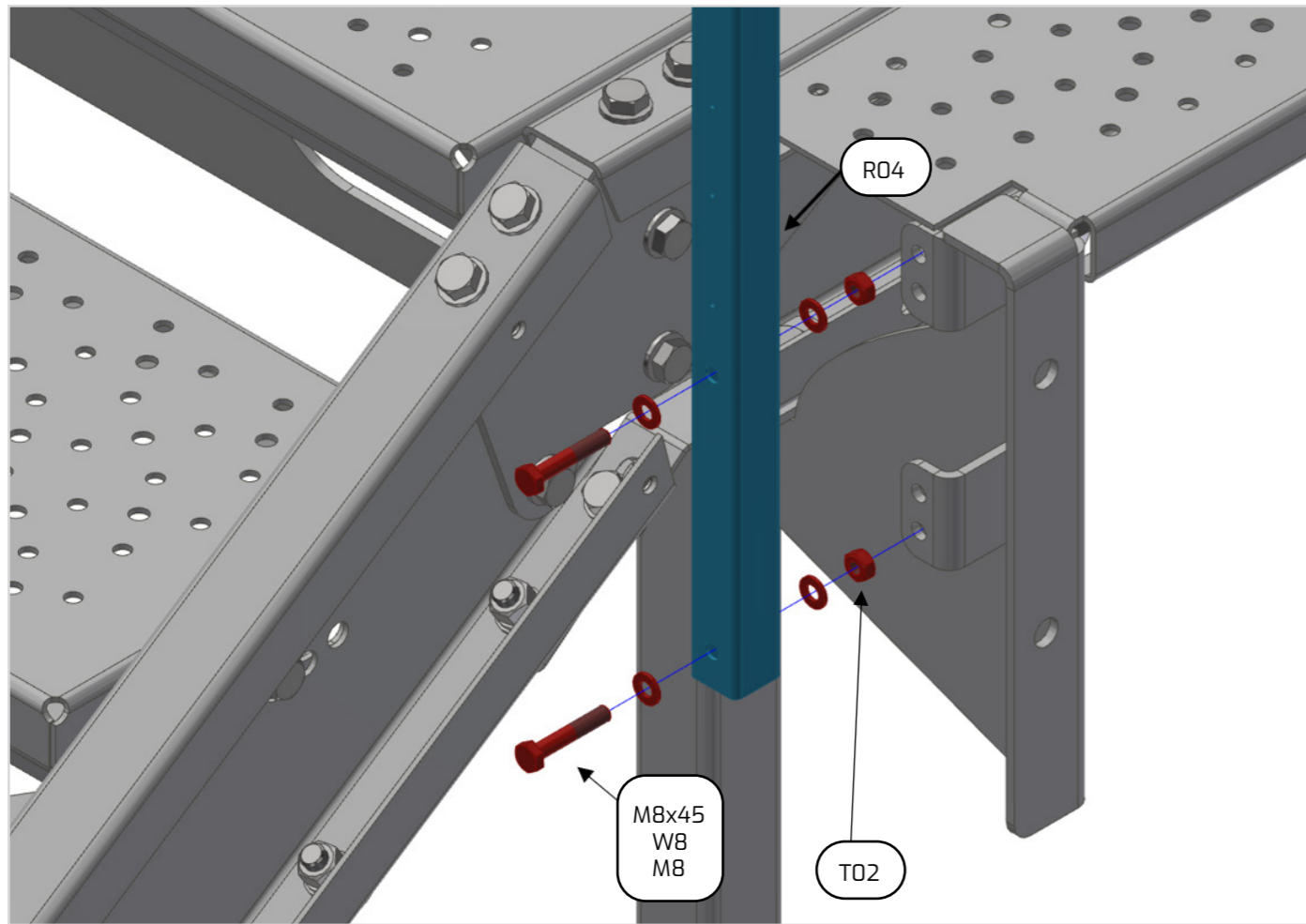
MONTERINGSHÅL $\alpha=40^\circ$ / ASSEMBLY OPENINGS $\alpha=40^\circ$ / MONTAGELÖCHER $\alpha=40^\circ$ /
OTWORY MONTAŻOWE $\alpha=40^\circ$

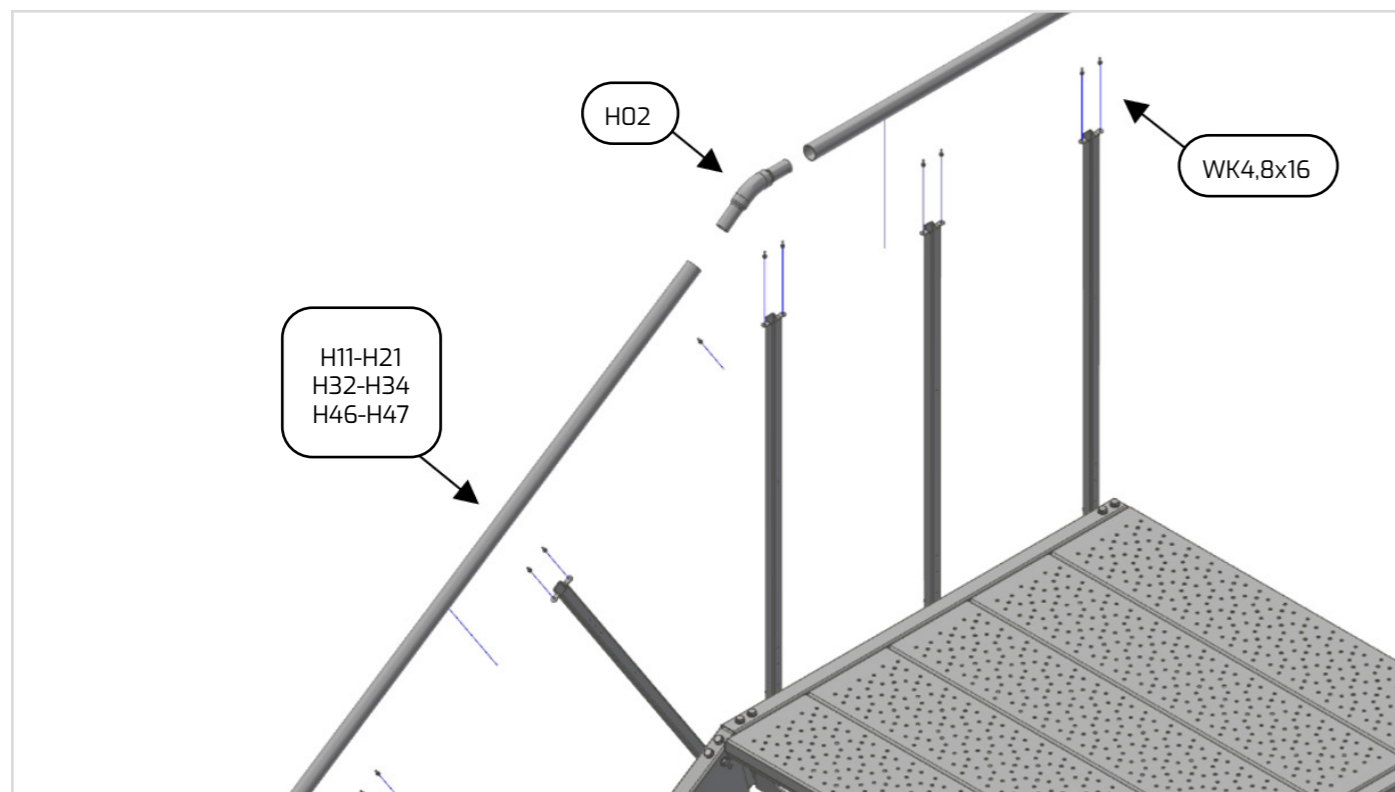


MONTAGE AV KRYSSTAG / ASSEMBLY OF STAIRS BRACING / MONTAGE DER TREPPEVERSTREBUNG /
MONTAŻ STĘŻENIA SCHODÓW

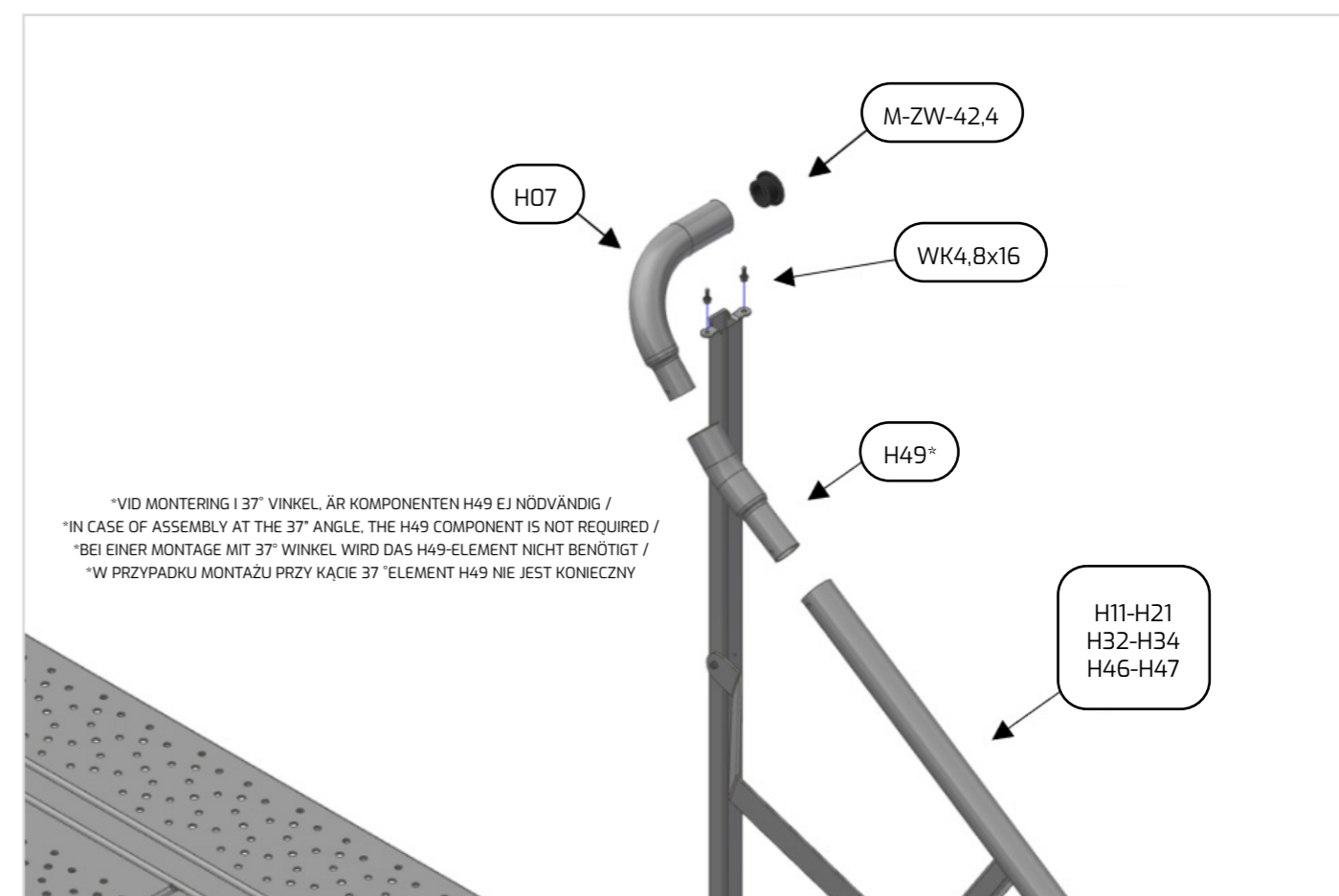
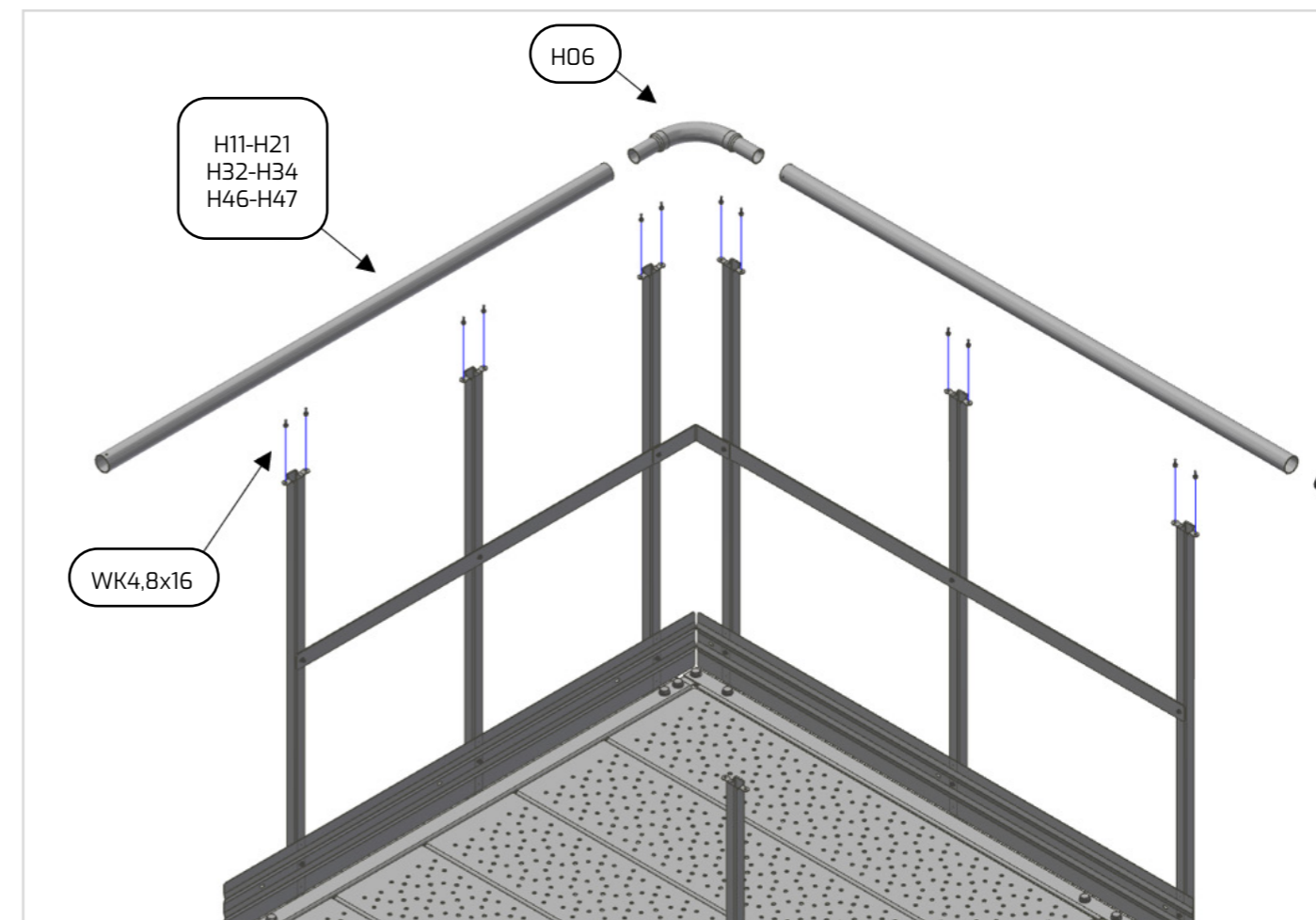
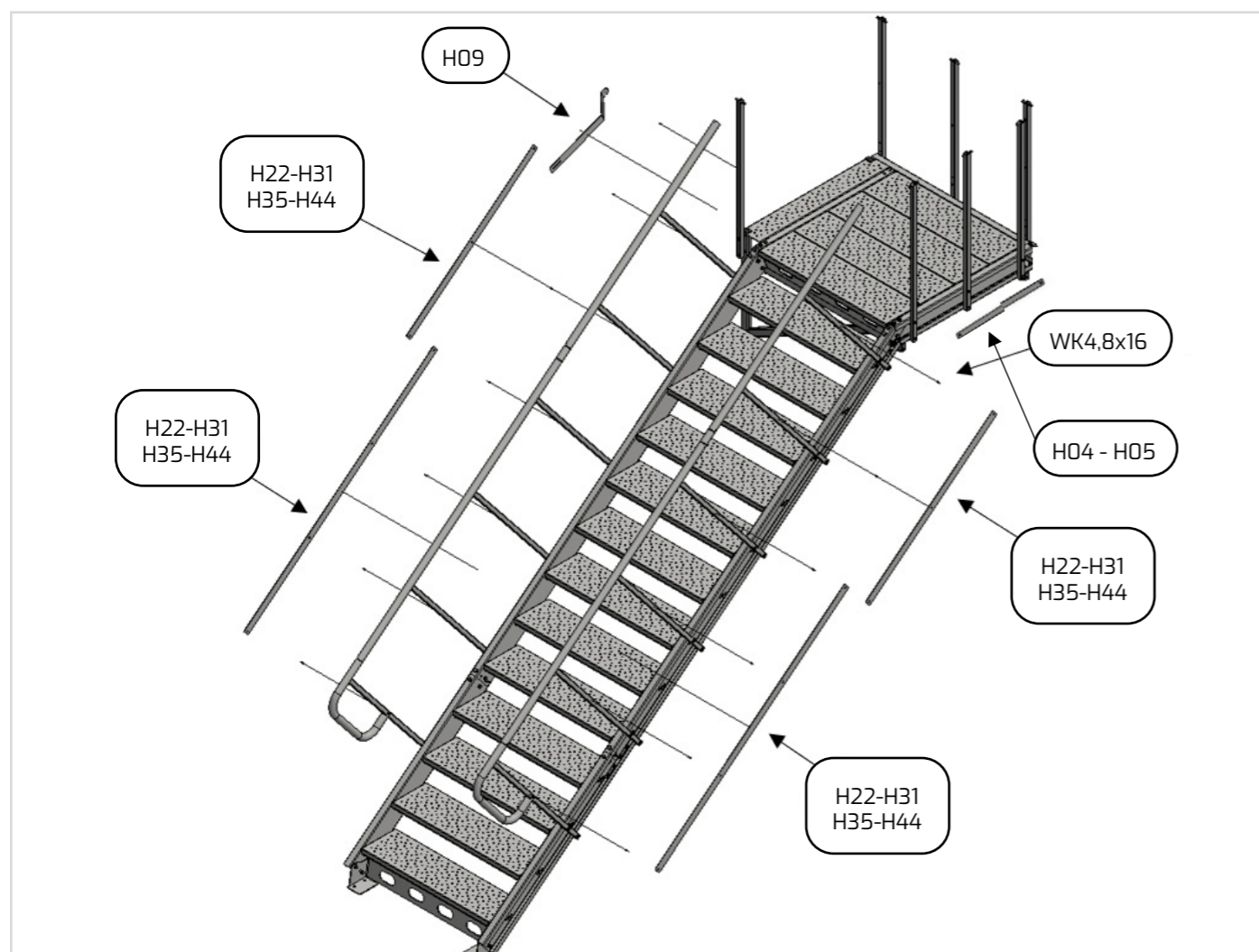


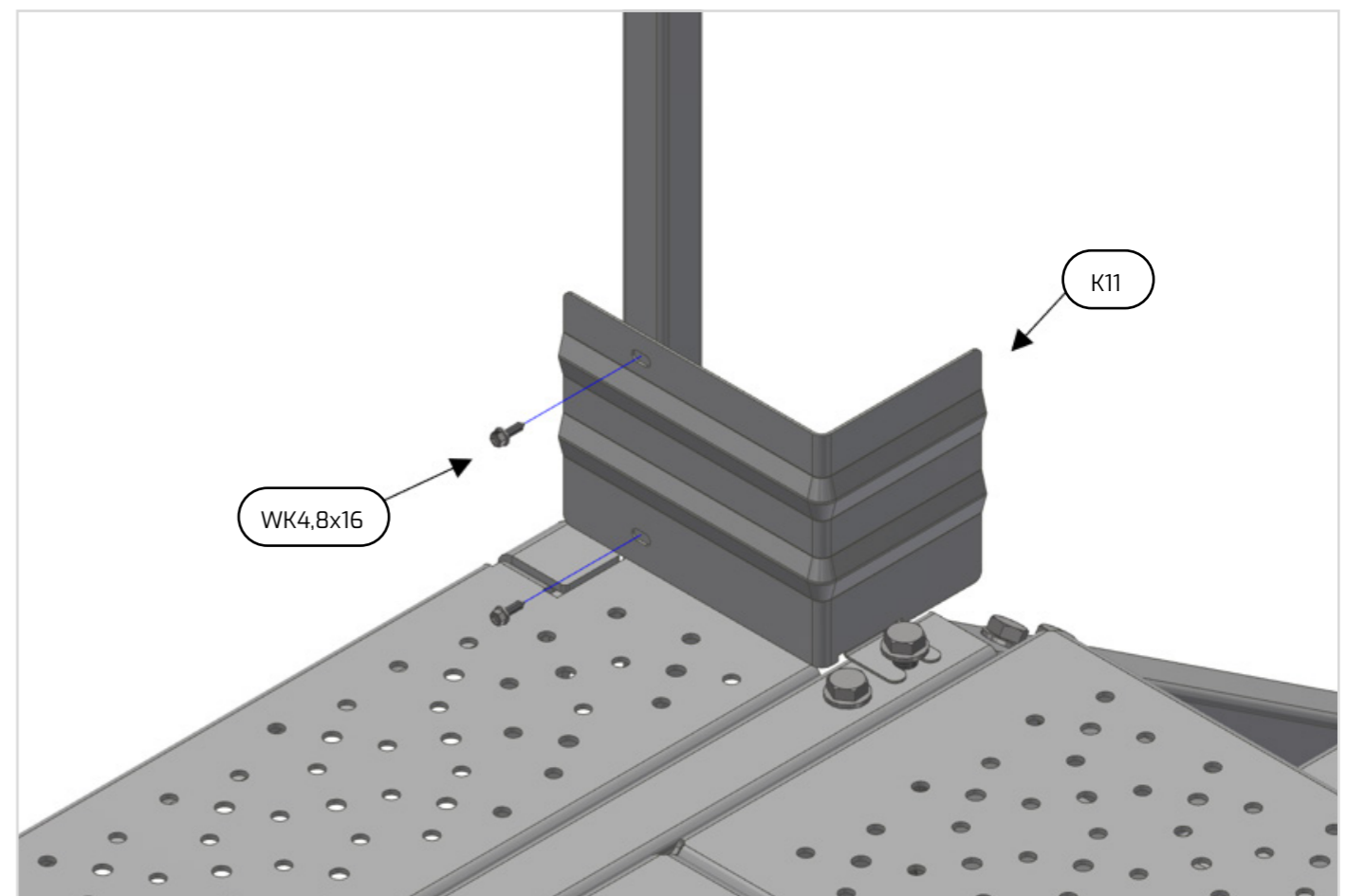
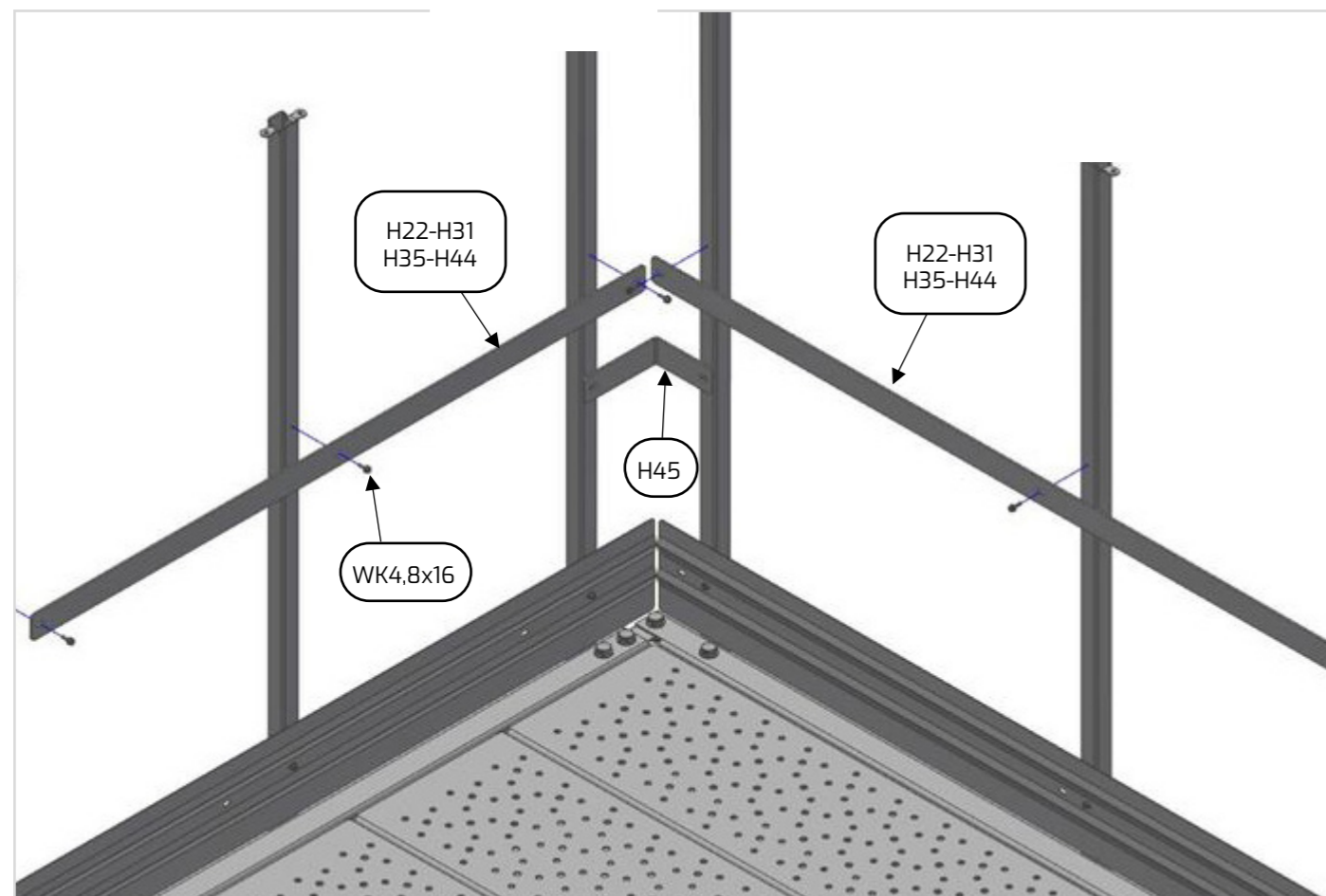
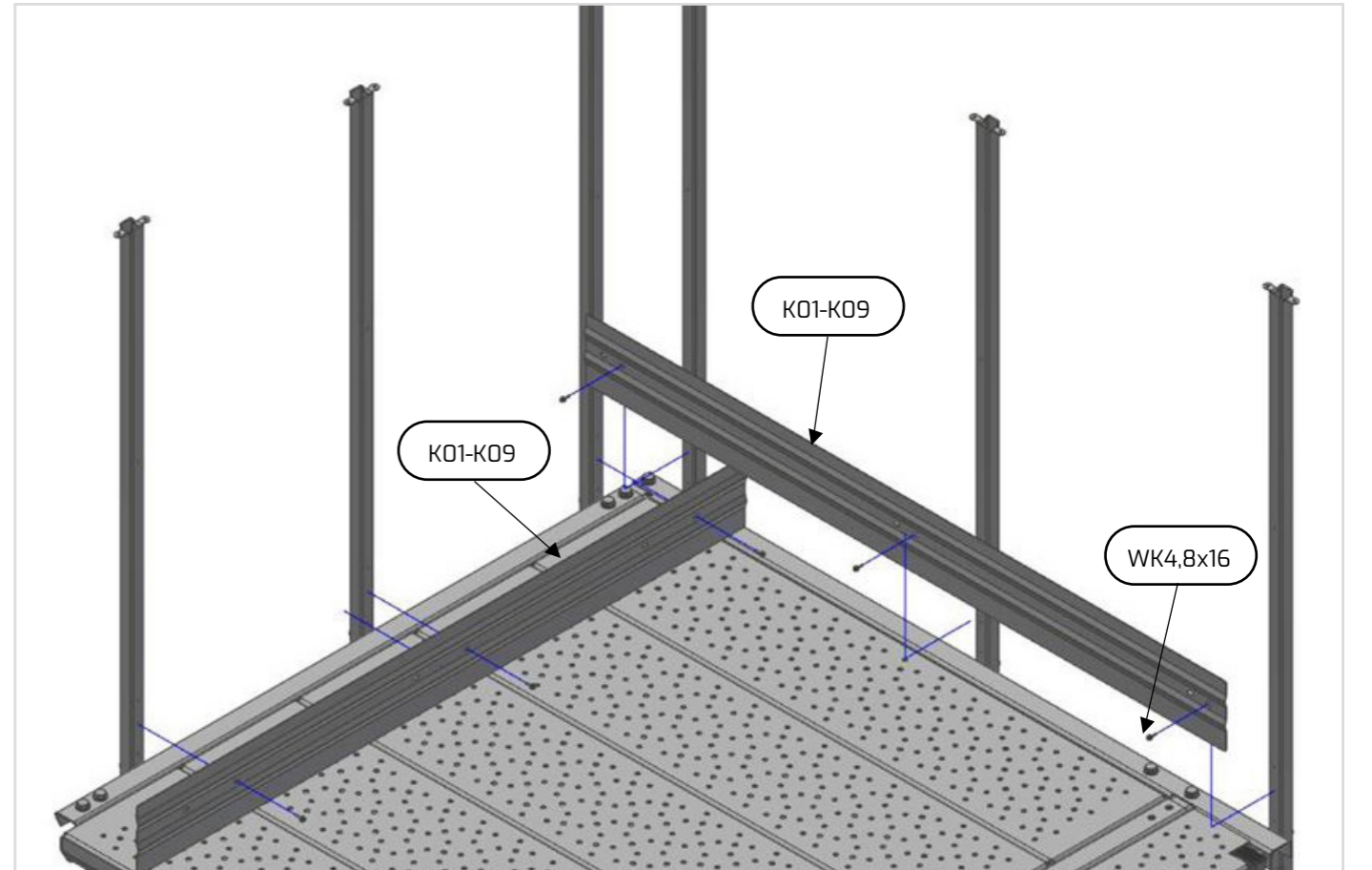
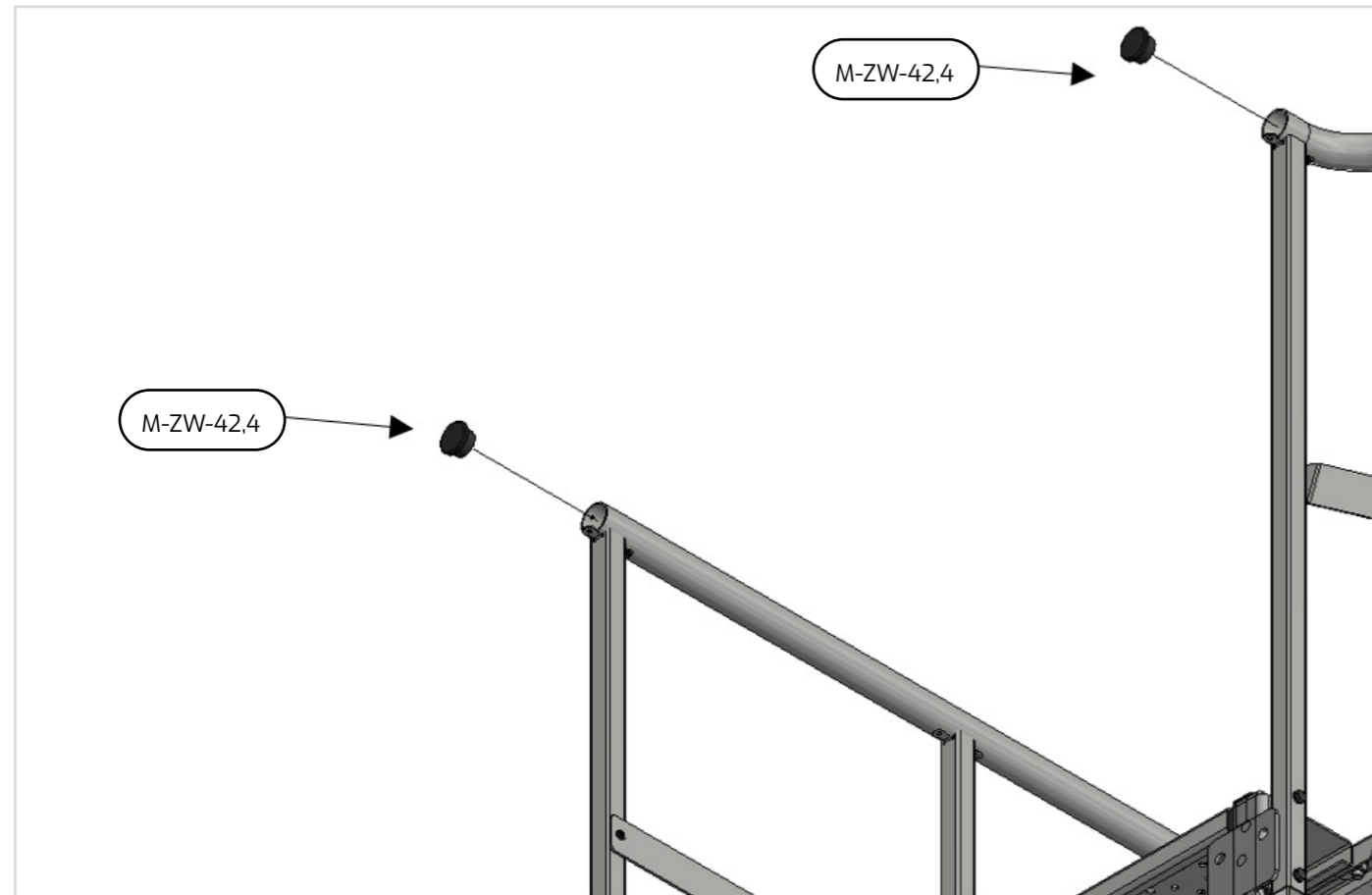


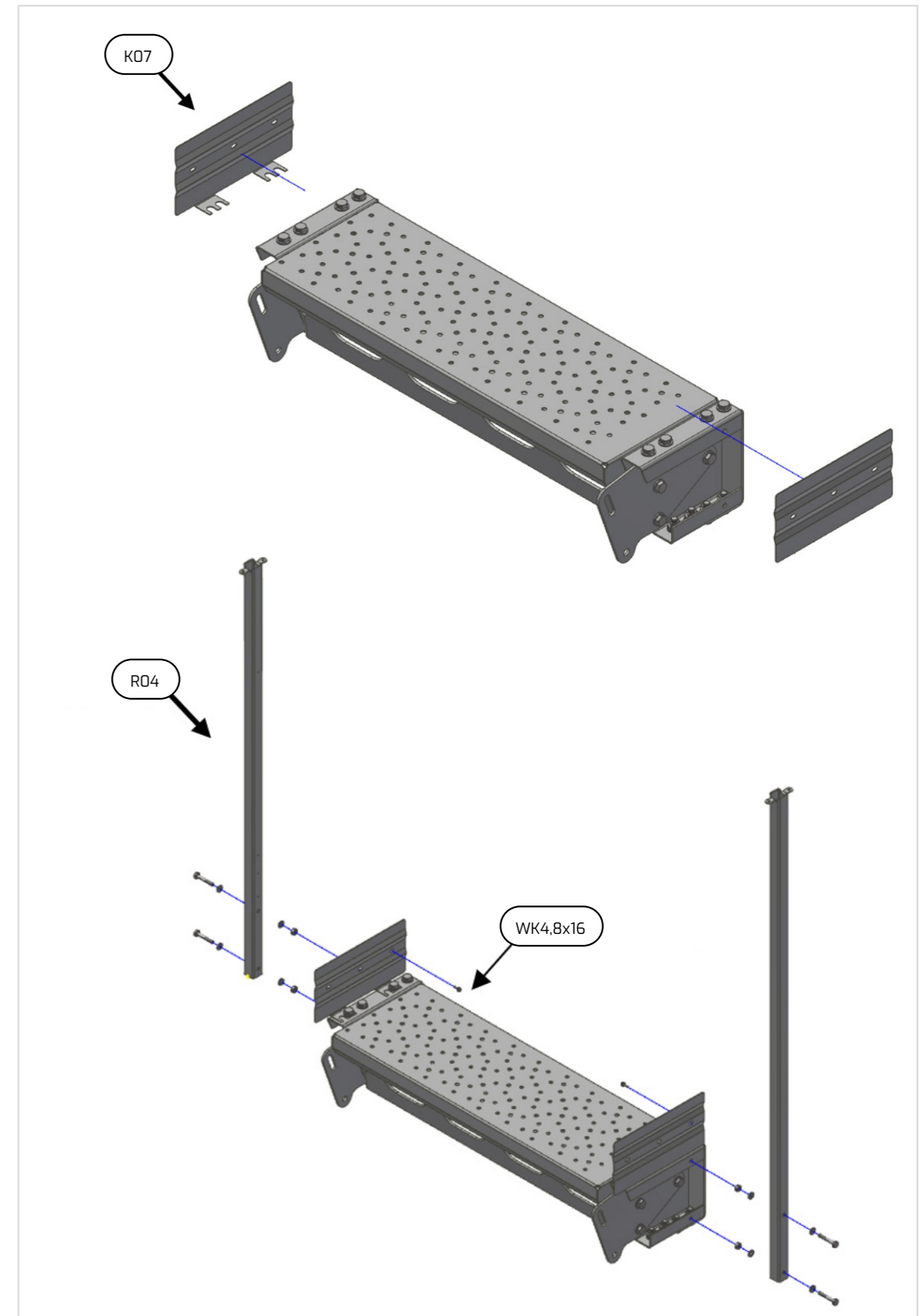
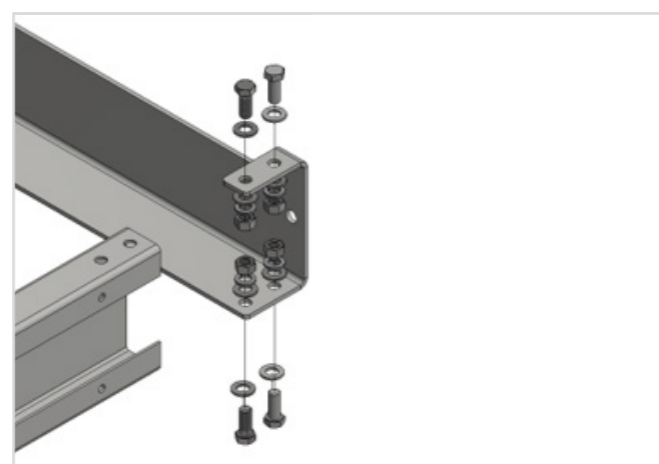
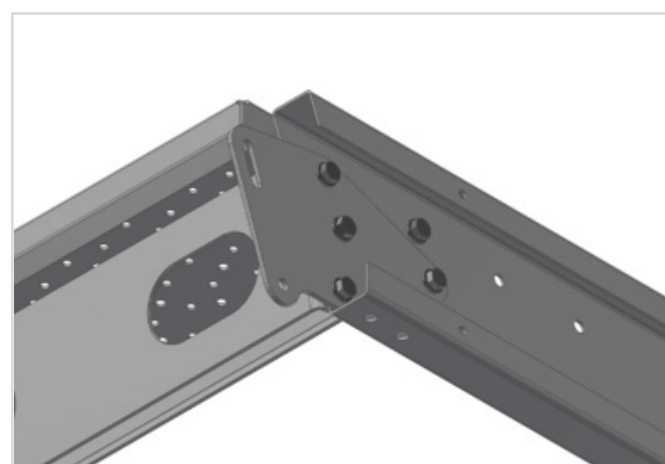
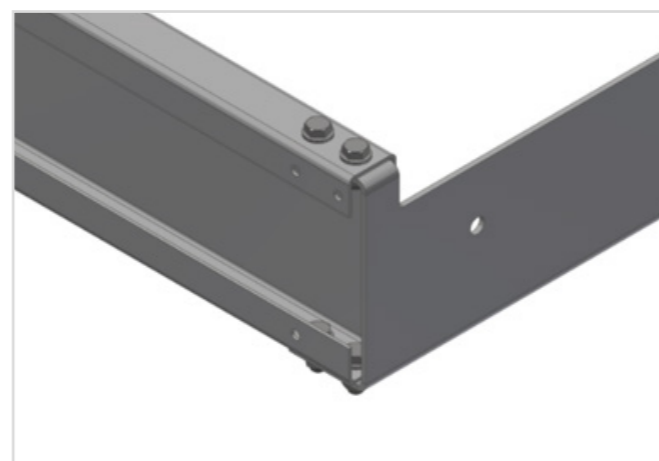
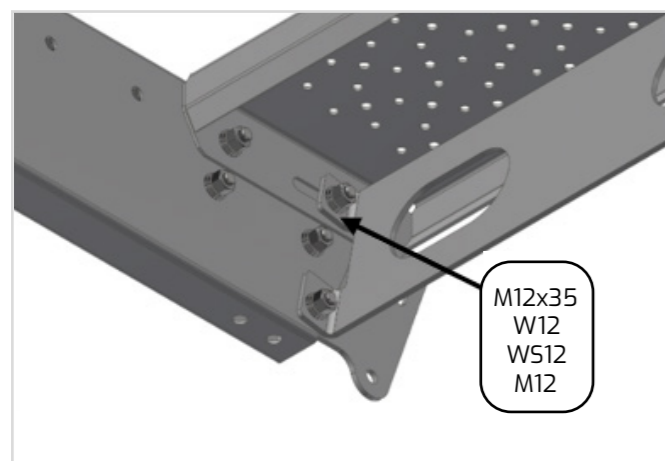
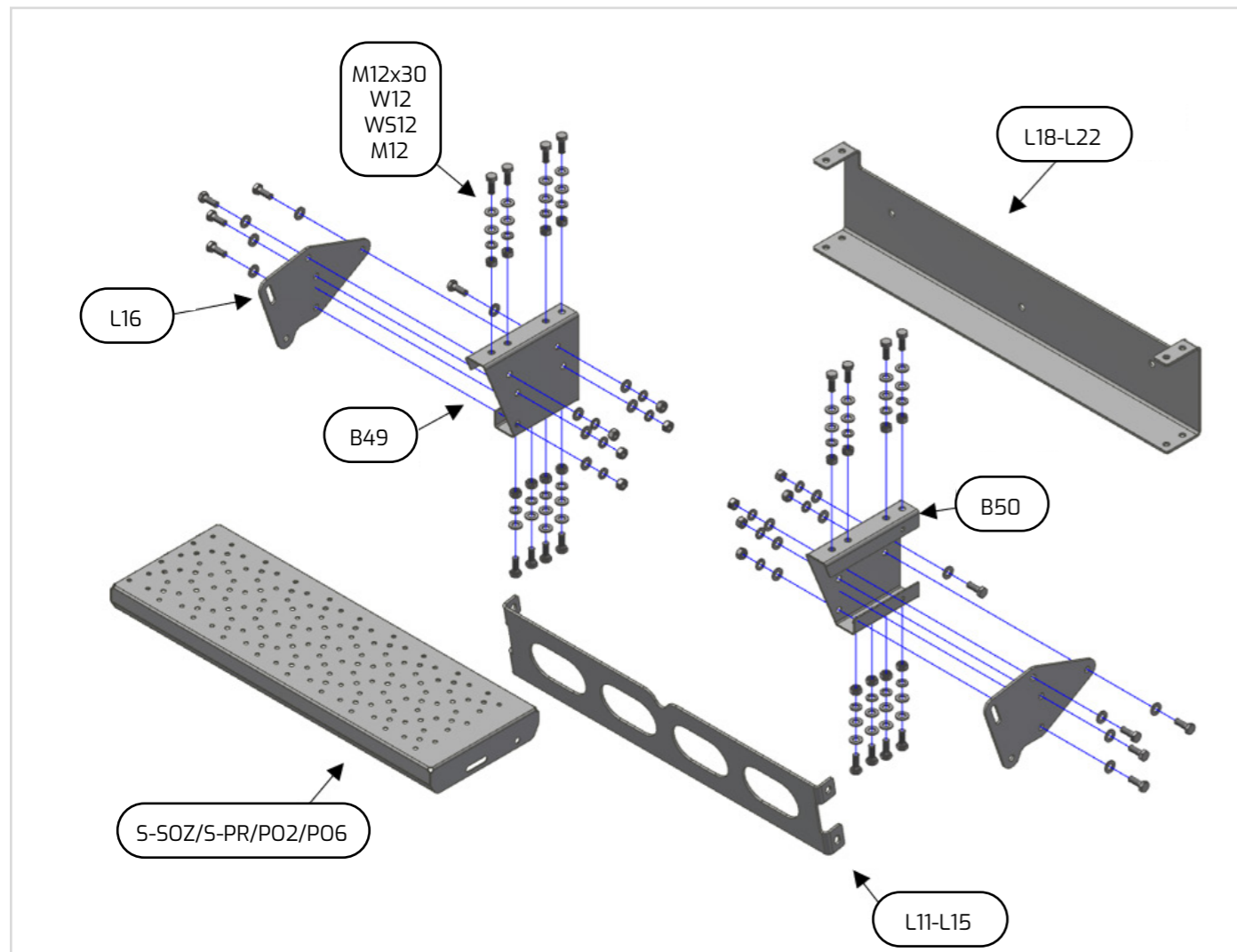


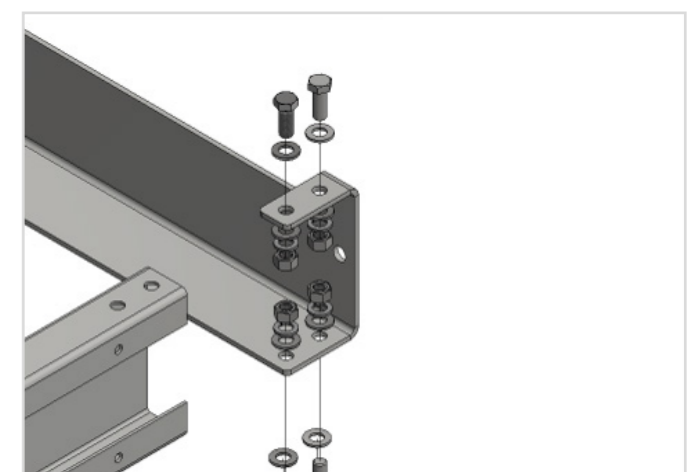
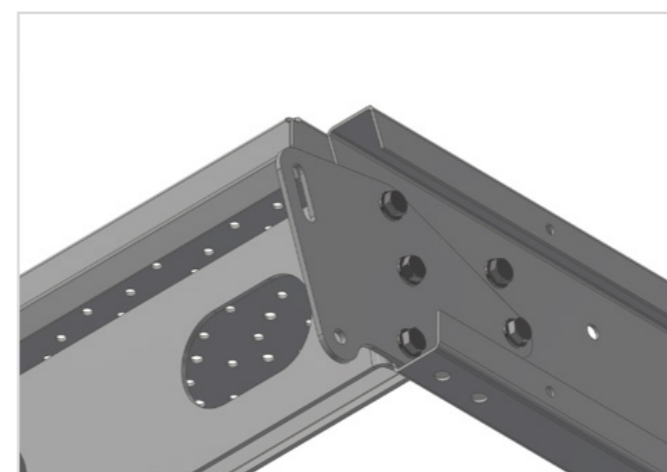
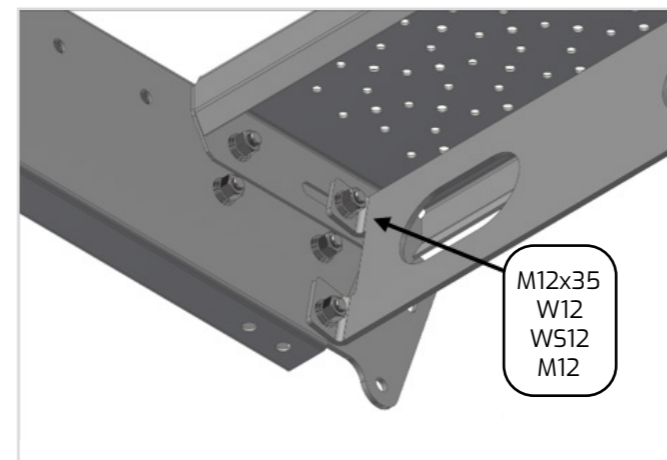
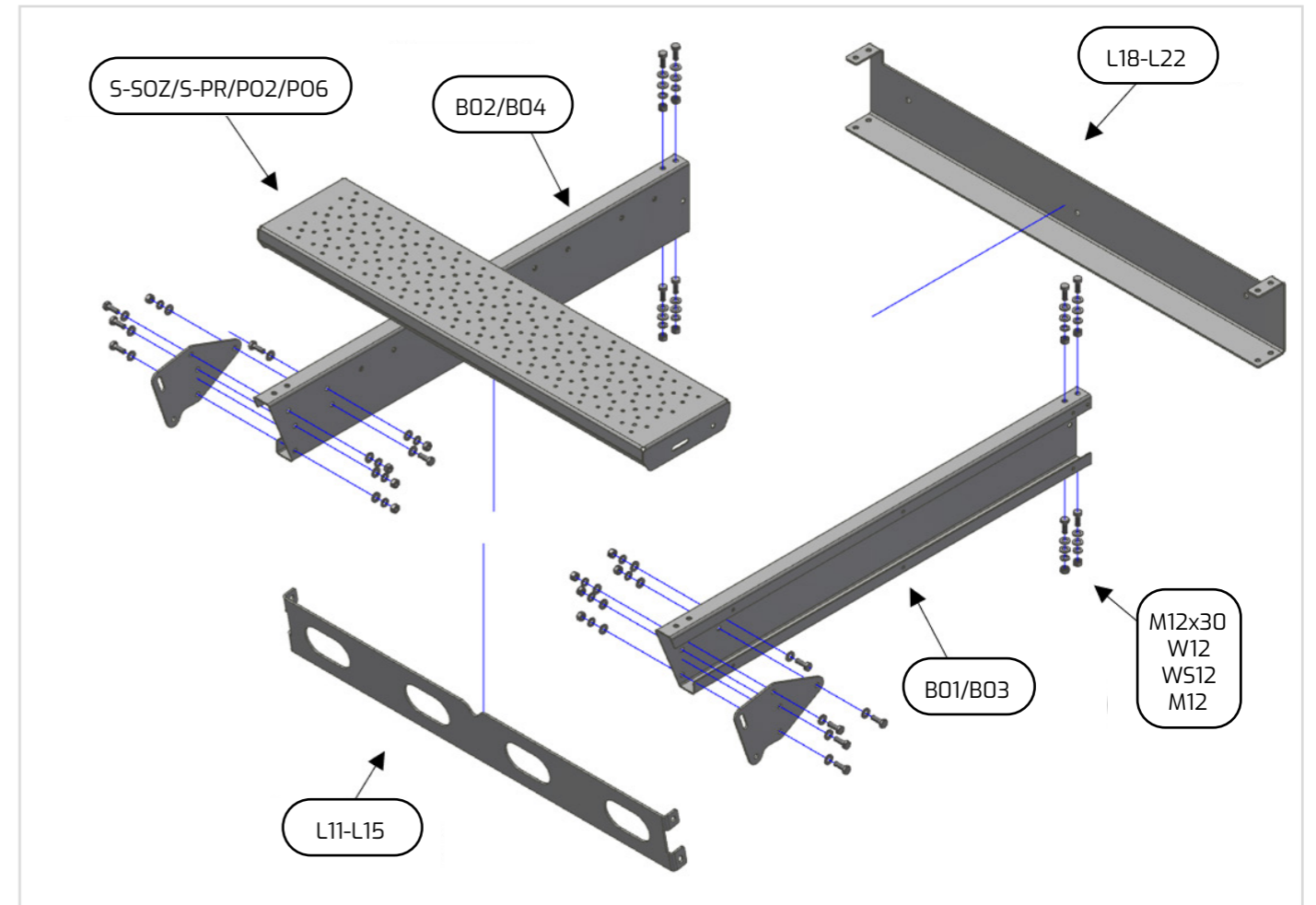
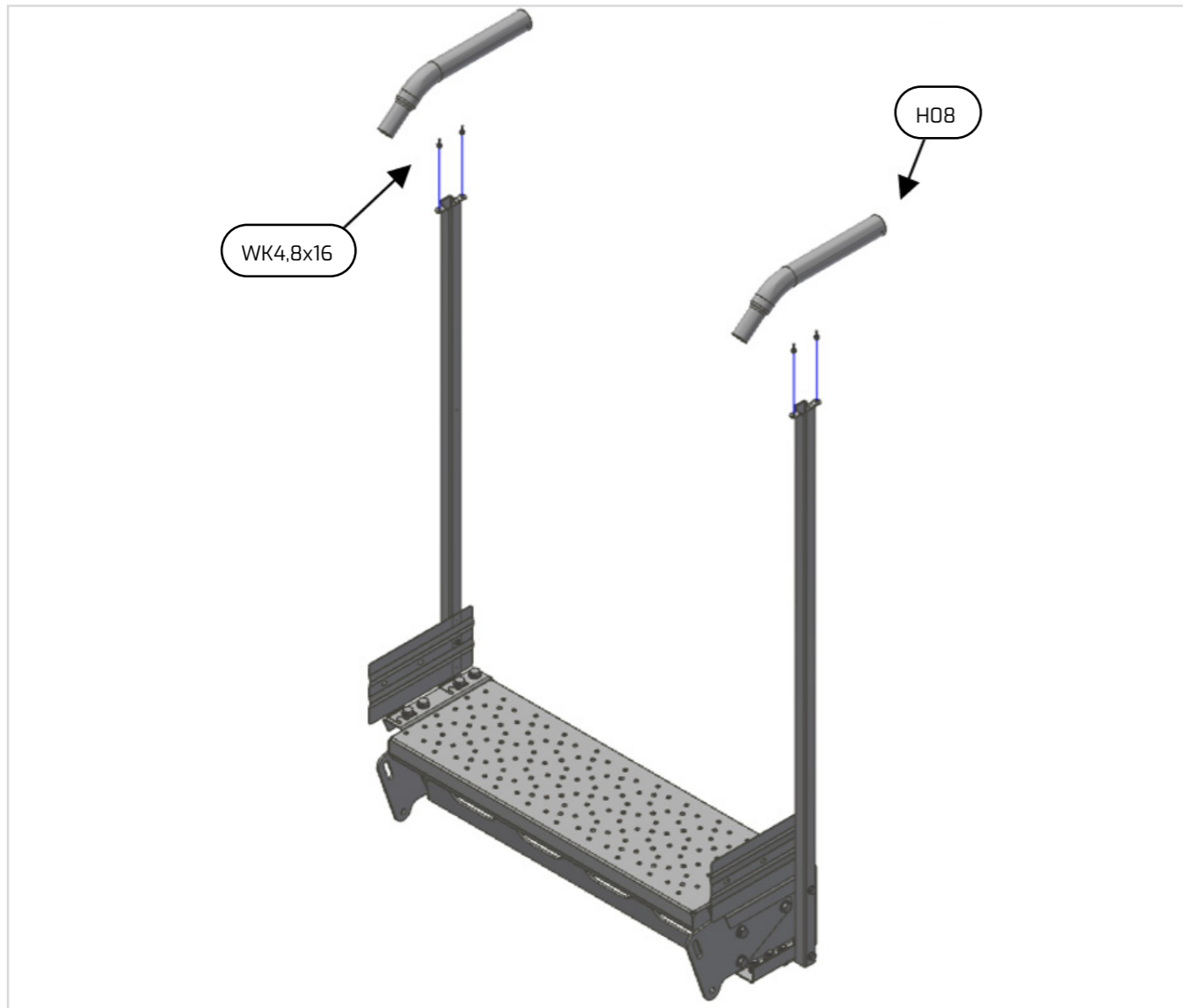


MONTAGE AV FÖLJARE TILL RÄCKE / ASSEMBLY OF RAILING HORIZONTAL BARS ON FLIGHT OF STAIRS / MONTAGE
 DER GELÄNDERHOLME AN DER TREPPE / MONTAŻ POPRZECZEK BARIERKI NA SCHODNI

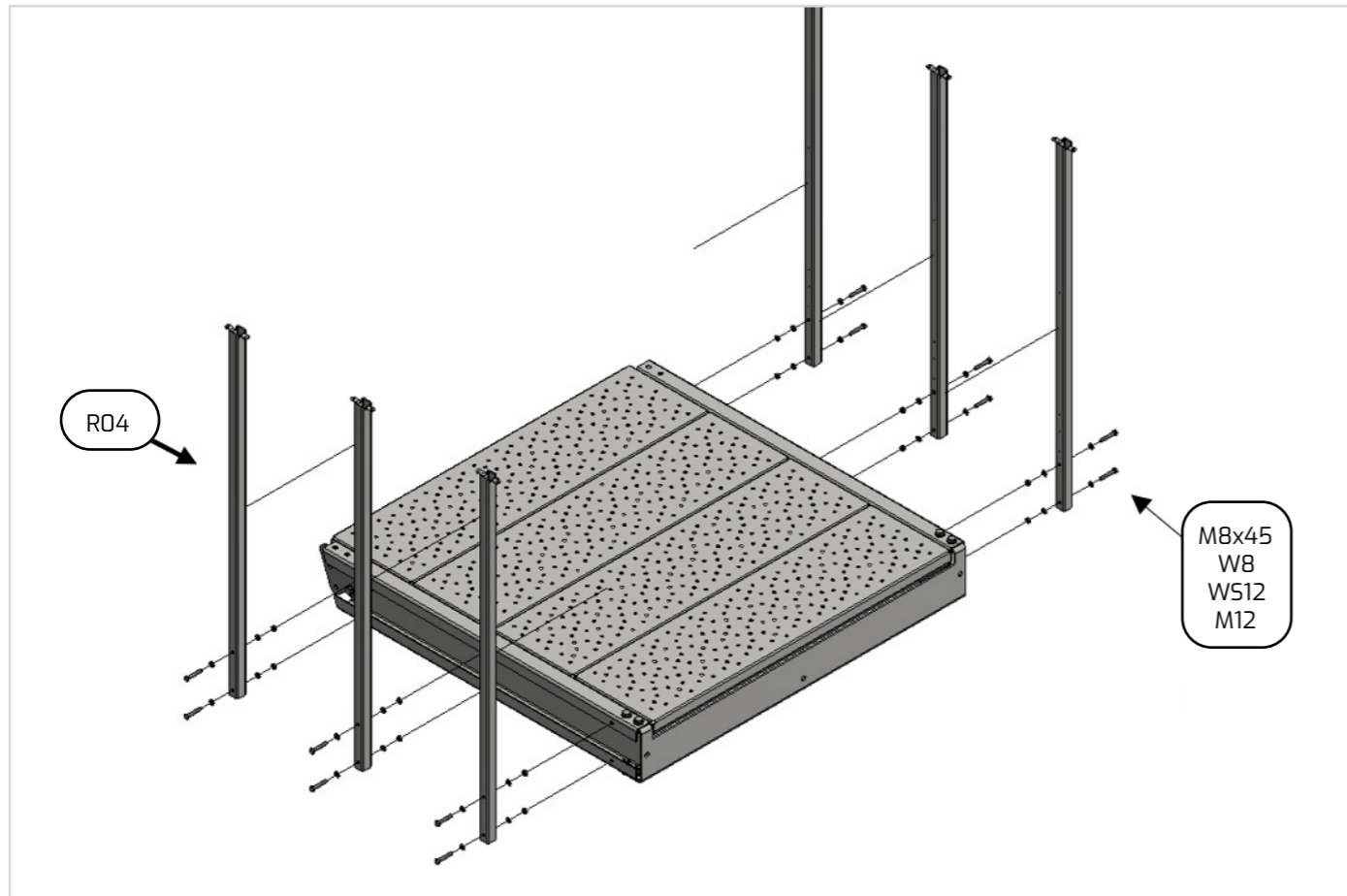




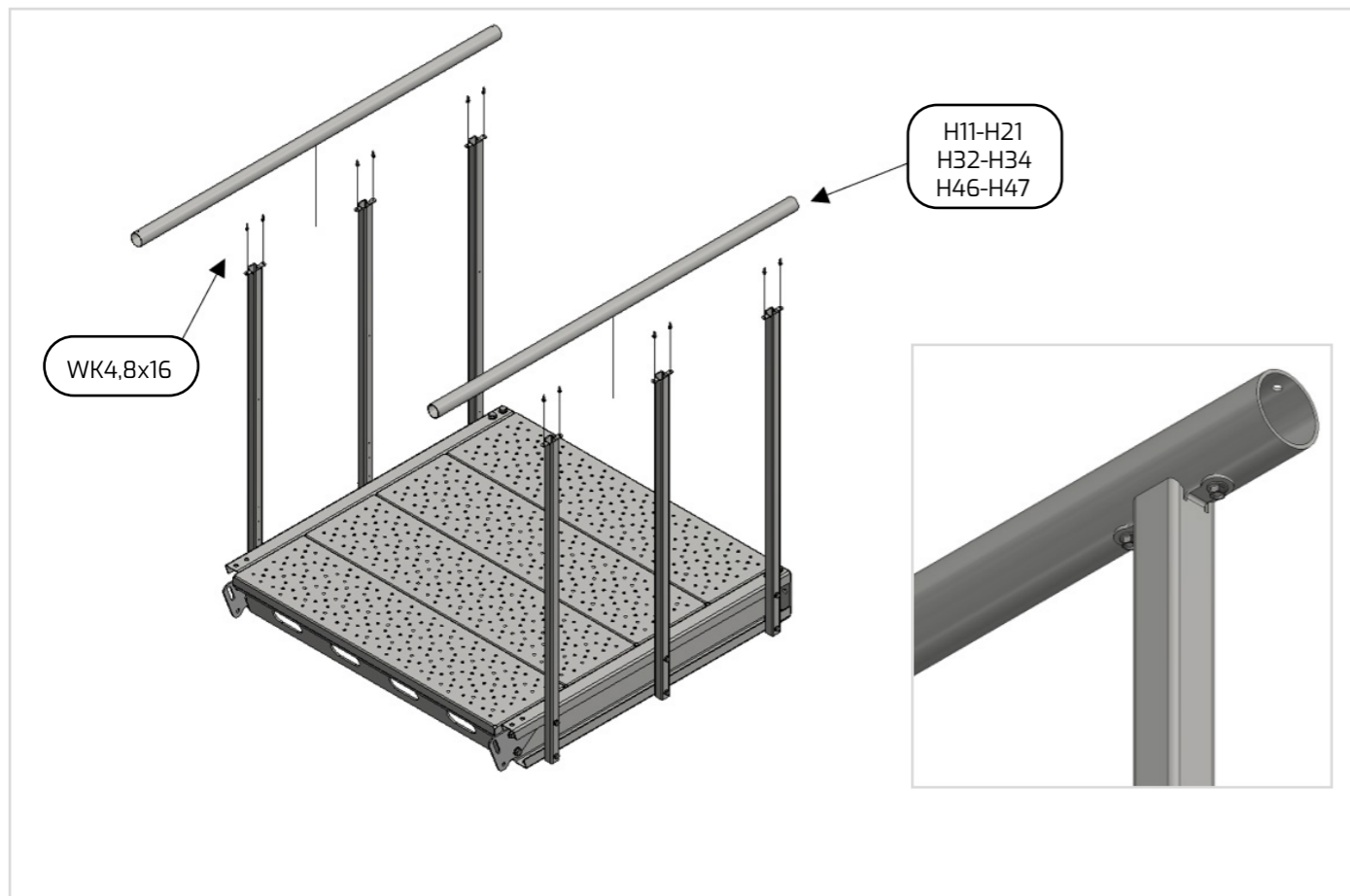




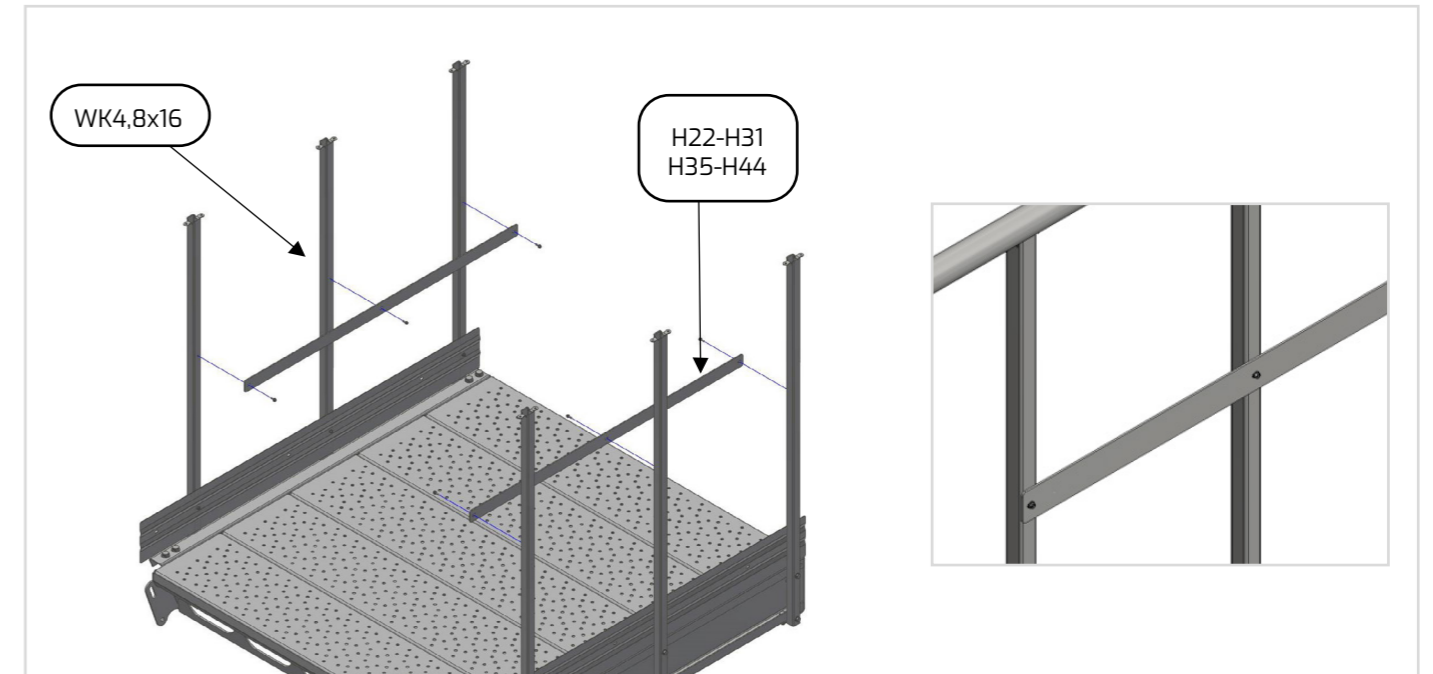
MONTAGE AV RÄCKE P PLAN / ASSEMBLY OF THE RAILING TO THE P LANDING / MONTAGE DER GELÄNDERPFOSTEN AN DEN P PODESTEN / MONTAŻ SŁUPKÓW BARIERKI DO PODESTU P



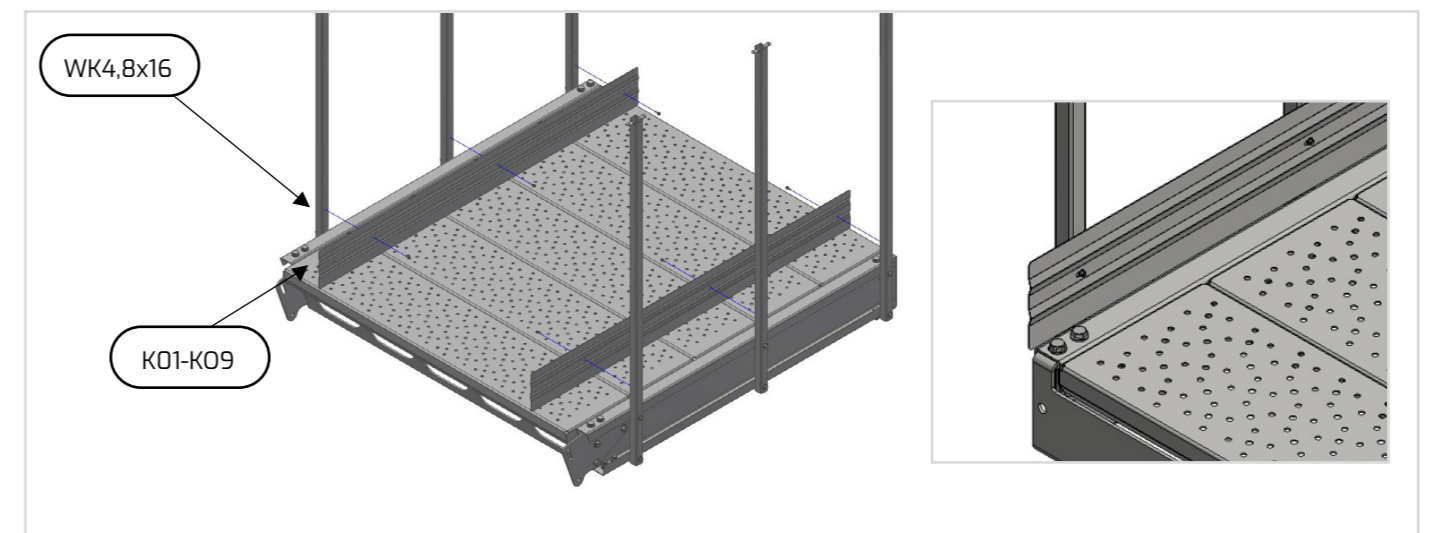
MONTAGE AV HANDLEDARE P PLAN / ASSEMBLY OF THE HANDRAIL ON THE P LANDING / MONTAGE DES HANDLAUFS AN DEN P PODESTEN / MONTAŻ POCHWYTU NA PODEŚCIE P



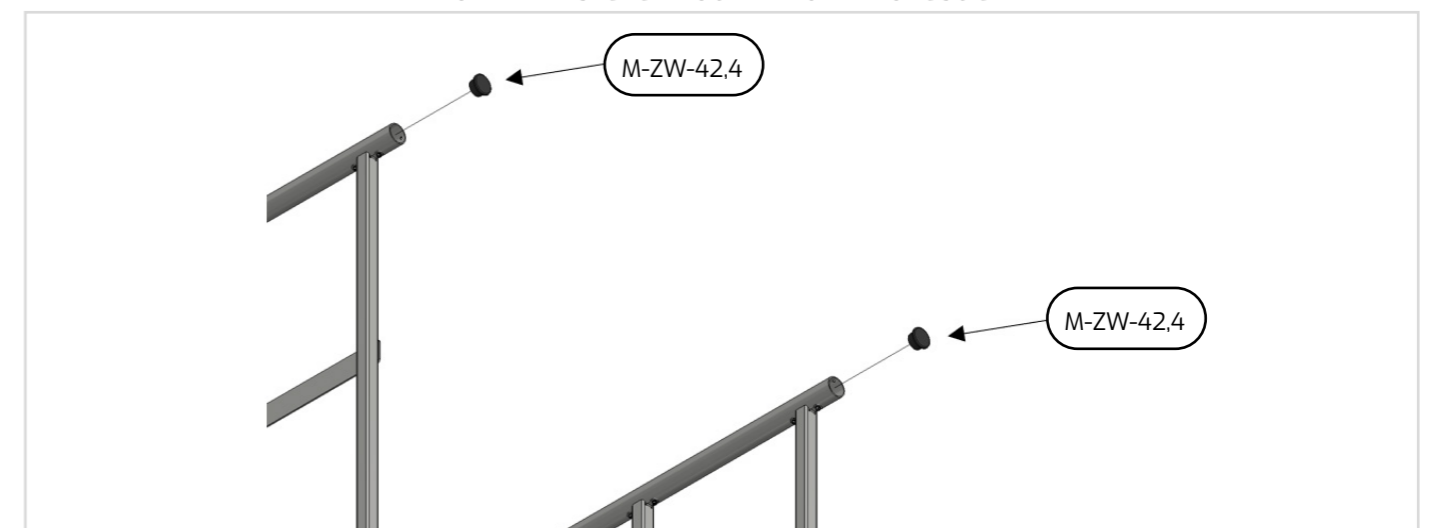
MONTAGE AV FÖLJARE P PLAN / ASSEMBLY OF THE HORIZONTAL BARS ON A P LANDING / MONTAGE DER GELÄNDERHOLME AUF EINER P PLATTFORM / MONTAŻ POPRZECZEK BARIERKI NA PODEŚCIE P



MONTAGE AV SPARKLIST P PLAN / ASSEMBLY OF THE TOEBOARDS ON A P LANDING / MONTAGE DER FUSSLEISTEN AUF DEM P PODEST / MONTAŻ BORTNIC NA PODEŚCIE P



MONTAGE AV ÄNDPLUGGAR P HANDLEDARE PLAN / ASSEMBLY OF PLUGS IN HANDRAILS ON A P LANDING / MONTAGE DER HANDLAUFENDKAPPEN AN DEN P PODESTEN / MONTAŻ ZAŚLEPEK POCHWYTU NA PODEŚCIE P



Tillverkad av:
Produced by:
Hergestellt von:
Wyprodukowano przez

**CERTIFIERAD TILLVERKARE
CERTIFIED MANUFACTURER
ZERTIFIZIERTER HERSTELLER
WYTWÓRCA CERTYFIKOWANY**

**TLC Sp. z o.o.
ul. Chopina 25N
38-300 Gorlice**



tlc.eu

info: +48 505 140 140

linea

MODULTRAPPOR

MODULAR
STAIRS

MODULTREPPE

SCHODY
MODUŁOWE